

COMPENDIUM ZEELAND

*Wat horen we in
de Delta Regio?*



September 2024

<u>INHOUDSOPGAVE</u>	2
FREQUENTIESPECTRUM	3
MARITIEM	
- GEBRUIKERS	6
- FREQUENTIES	7
- KAARTJES VERKEERSKANALEN EN RADARKANALEN	8
- SCHEEPVAARTBERICHTEN	10
- DELTA SCANNER ZEELAND	11
LUCHTVAART	
- FREQUENTIES	12
- FLIGHTLEVEL / FEET / LEVEL	13
- LUCHTRUIM GEZIEN VANAF HET WESTEN (DE NOORDZEE)	14
- LUCHTRUIM GEZIEN VANAF HET ZUIDEN	15
RADIOAMATEURS	
- REPEATERS MET KAARTJES VAN CTCSS PER REGIO	16
- VOORKEUR FREQUENTIES FF/SOTA/POTA/QRP EN BANDPLAN	17
- BAKENS & BENELUX DX CLUB	18
- LANGE GOLF BAKENS EN MORSE ALFABET	19
- PREFIXEN	20
- QTH LOCATOR KAARTEN	24
- AZIMUTALE RADIOKAARTEN	26
- AMATEUR BEACON NETWORK	28
- NUMBER STATIONS & SINPO CODE	29
- PRIVATE SHORTWAVE STATIONS EN LOKALE AM STATIONS (02/'24)	30
- TIJDZONES	32
- WRTH TABELLEN	34

PA1FZH/PD4AVO

Dit is een uitgave van Delta Scanner Zeeland bedoeld voor de gevorderde luister- en zendamateurs evenals scannerluisteraars en radio-belangstellenden.

Uitgebreide informatie is terug te vinden op de website www.deltascannerzeeland.nl

September 2024

FREQUENTIESPECTRUM

VAN – TOT		GEBRUIK	OPMERKING
0,3 – 3	kHz		Defensie, onderzeeboten
3 – 130	kHz		Tijdsignalen, Defensie, bakens
135,7 – 137,8	kHz	Amateur	2200 meter
138 – 153	kHz	Luchtvaart	Bakens
153 – 280	kHz	Omroep	Lange golf
280 – 434	kHz	Luchtvaart	Bakens
434 – 472	kHz		
472 – 479	kHz	Amateur	630 meter
479 – 531			NAVTEX
531 – 1600	kHz	Omroep	Middengolf
1,60 – 1,80	MHz	Scheepvaart	
1,80 – 2,00	MHz	Amateur	160 meter
2,00 – 2,80	MHz	Scheepvaart	
2,30 – 2,50	MHz	Omroep	120 meter tropenband
2,80 – 3,20	MHz	Luchtvaart	
3,20 – 3,40	MHz	Omroep	90 meter tropenband
3,30 – 3,40	MHz	Scheepvaart	
3,40 – 3,50	MHz	Luchtvaart	
3,50 – 3,80	MHz	Amateur	80 meter
3,80 – 3,95	MHz	Luchtvaart	
3,95 – 4,00	MHz	Omroep	75 meter tropenband
4,10 – 4,44	MHz	Scheepvaart	
4,44 – 5,80	MHz	Diversen	Luchtvaart , scheepvaart, Defensie
4,75 – 5,07	MHz	Omroep	60 meter
5,35 – 5,37	MHz	Amateur	60 meter
5,95 – 6,20	MHz	Omroep	49 meter
6,20 – 6,52	MHz	Scheepvaart	Maar ook nog omroep
6,52 – 7,00	MHz	Luchtvaart	Ook Defensie
7,00 – 7,20	MHz	Amateur	40 meter
7,20 – 7,50	MHz	Omroep	41 meter
7,50 – 8,20	MHz	Luchtvaart	Ook Defensie
8,20 – 8,80	MHz	Scheepvaart	
8,80 – 9,40	MHz	Luchtvaart	
9,40 – 9,90	MHz	Omroep	31 meter
9,90 – 10,1	MHz	Luchtvaart	
10,10 – 10,15	MHz	Amateur	30 meter
10,15 – 11,60	MHz	Luchtvaart	
11,60 – 12,10	MHz	Omroep	25 meter

12,20 – 13,20	MHz	Scheepvaart	
13,20 – 13,36	MHz	Luchtvaart	
13,60 – 13,87	MHz	Omroep	21 meter
13,87 – 14:00	MHz	Rode Kruis	Internationaal
14,00 – 14,35	MHz	Amateur	20 meter
14,60 – 15,10	MHz	Luchtvaart	Ook Defensie
15,10 – 15,80	MHz	Omroep	19 meter
15,80 – 16,36	MHz	Diversen	
16,36 – 17,40	MHz	Scheepvaart	
17,50 – 17,90	MHz	Omroep	16 meter
17,90 – 18,00	MHz	Luchtvaart	Ook Defensie
18,068 – 18,168	MHz	Amateur	17 meter
18,20 – 18,80	MHz	??	
18,80 – 20,00	MHz	Scheepvaart	
20,00 – 21,00	MHz	Luchtvaart	Ook Defensie en rode Kruis
21,00 – 21,45	MHz	Amateur	15 meter
21,45 – 21,75	MHz	Omroep	13 meter
21,85 – 22,00	MHz	Luchtvaart	
22,00 – 22,85	MHz	Scheepvaart	
23,20 – 24,89	MHz	Luchtvaart	Ook Defensie
24,89 – 24,99	MHz	Amateur	12 meter
25,00 – 26,20	MHz	Scheepvaart	
25,60 – 26,10	MHz	Omroep	11 meter
26,10 – 26,50	MHz	Scheepvaart	
26,60 – 26,96	MHz	CB	27 Mc uitbreiding Duitsland
26,96 – 27,40	MHz	CB	27 Mc, ook modelbesturing
27,40 – 28,00	MHz	CB	27 Mc, uitbreiding Engeland
28,00 – 29,70	MHz	Amateur	10 meter
31,00 – 40,00	MHz		Telefonie, modelbesturing, audioverbindingen, oproepsystemen
43,30 – 50,00	MHz		Telefonie, Italiaanse LPD, Defensie Heli
50,0 – 52,0	MHz	Amateur	6 meter
52,00 – 55,00	MHz		
55,00 – 70,00	MHz	Luchtvaart	Alleen Defensie
70,0 – 70,5	MHz	Amateur	4 meter
70,50 – 72,00	MHz	Luchtvaart	Alleen Defensie
72,00 – 79,80	MHz		Draadloze microfoons en Defensie
72,62 – 87,50	MHz		Rode Kruis, Defensie
76,0 – 87,5	MHz	Omroep	FM band buiten Europa
87,5 – 107,9	MHz	Omroep	FM band Europa

108 – 118	MHz	Luchtvaart	Bakens
118 – 137	MHz	Luchtvaart	Communicatie
137 – 144	MHz	Luchtvaart	Defensie
144 – 146	MHz	Amateur	2 meter
146 – 149	MHz		Kerkradio en commercieel
150 – 156	MHz		Verhuur, bedrijven, taxi, kerkradio
156 – 158	MHz	Scheepvaart	Marifoon & Maritieme private kanalen
158 – 160	MHz	Scheepvaart	Marifoon & Maritieme private kanalen
160 – 162	MHz	Commercieel	Verhuur, bedrijven, taxi
162 – 163	MHz	Scheepvaart	Marifoon
163 – 174	MHz	Commercieel	Verhuur, bedrijven, Rode Kruis, RedNet
174 – 230	MHz	Omroep	DAB radio en analoog reporter-studio
233 – 388	MHz	Luchtvaart	Ook Defensie en satcom
330 – 334	MHz	Luchtvaart	Bakens
385 – 425	MHz	C-2000	Politie, Brandweer, Ambulance
417 – 430	MHz		Regionale Omroep, diversen, commercieel
430 – 440	MHz	Amateur	70 cm
433 – 435	MHz	LPD	
441 – 442	MHz	Defensie	Natres
442 – 446	MHz		RWS-DGPS, commercieel
446 – 447	MHz	PMR	
447 – 450	MHz	Defensie	Onderling verkeer fregatten
450 – 474	MHz		Commercieel, NOB, schepen on-board
690 – 865	MHz		Digitenne, draadloze microfoons
880 – 960	MHz	Telefonie	GSM, DECT, short range device, telemetrie
962 - 1213	MHz	Luchtvaart	Bakens
1240 – 1300	MHz	Amateur	23 cm
1452 – 1492	MHz		Broadcast?
1626 – 1645	MHz	Telefonie	Inmarsat
1700 – 1900	MHz	Telefonie	GSM
1900 – 2200	MHz	Telefonie	UMTS
2300 – 2450	MHz	Amateur	13 cm
2400 – 2480	MHz		Bluetooth en WiFi
2450	MHz		Magnetron oven
2500 – 2700	MHz	Telefonie	UMTS
2700 – 3000	MHz	Telefonie	RADAR

MARITIEM

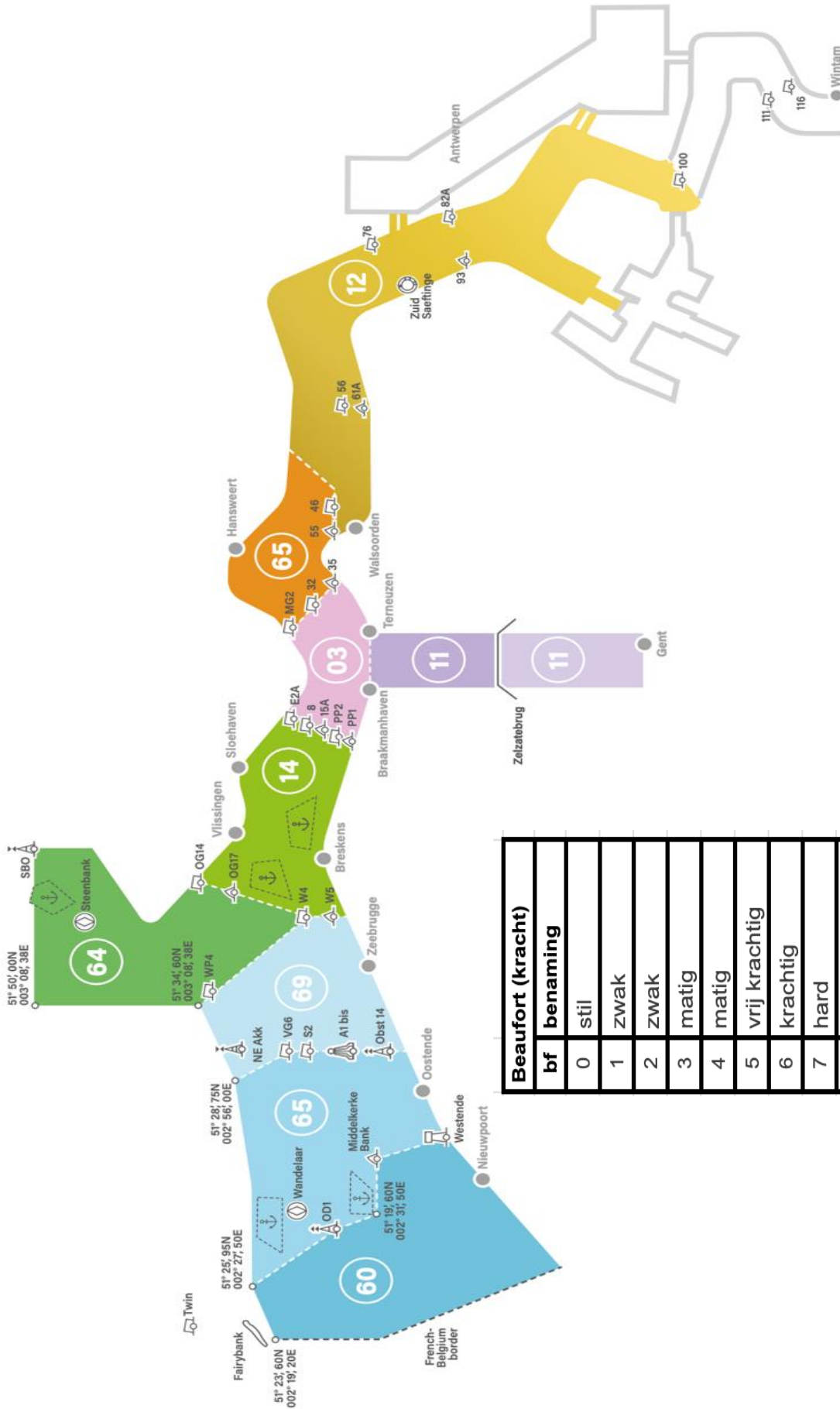
156.000	VHF 00	KNRM onderling
156.375	VHF 67	Search And Rescue / Kustwacht
156.300	VHF 06	Westsluis Terneuzen
156.400	VHF 08	Sleepdiensten
156.425	VHF 68	Post Wemeldinge (Oosterschelde)
156.450	VHF 09	Havendienst (VTS) Vlissingen-Oost en Vlissingen-Buitenhaven
156.475	VHF 69	Traffic Centre Zeebrugge, Sluis Coördinatie Terneuzen
156.500	VHF 10	Veerse Meer, Grevelingenmeer, ScheldeRijnkanaal
156.550	VHF 11	Haven Terneuzen, Haven Zelzate, Haven Gent
156.575	VHF 71	Port Control Zeebrugge
156.600	VHF 12	Centrale Zandvliet
156.650	VHF 13	RWS / ligplaatsen haven Terneuzen
156.700	VHF 14	Centrale Vlissingen
156.800	VHF 16	Nederlandse Kustwacht, Oostende Radio
157.400	VHF 28	Nieuwe Sluis Terneuzen (Q4 2024)
157.450	VHF 29	Loodswezen Roeierswacht Vlissingen
157.600	VHF 32	Boluda Towage Westerschelde
157.650	VHF 33	Rederij Dijkhuizen Walcheren
158.000	VHF 40	Loodswezen Rededienst Vlissingen
160.625	VHF 60	Haven Antwerpen Dokken en Schelderijnkanaal
160.650	VHF 01	Maas Approach, Haven Antwerpen
160.675	VHF 61	Haven Antwerpen sector Linkeroever
160.700	VHF 02	Maas Pilot, Haven Antwerpen sector Polder
160.750	VHF 03	Centrale Terneuzen, Maas Entrance
160.800	VHF 04	Radar Zandvliet, Haven Zeebrugge
160.825	VHF 64	Traffic Centre Steenbank, Volkeraksluizen
160.850	VHF 05	Haven Gent
160.875	VHF 65	Centrale Hansweert, Traffic Centre Wandelaar
160.925	VHF 66	Radar Kruisschans
160.950	VHF 07	Oostende Radio
161.300	P1	Zeevisserij
161.400	P2	Zeesportvisserij
161.500	VHF 18	Sluis Veere & Vlissingen, Zeelandbrug, Zandkreeksluis
161.500	VHF 18	Oostsluis Terneuzen, Roompotsluis, Bergsediepsluis
161.525	VHF 78	Oostende Radio
161.550	VHF 19	Radar Control Zeebrugge
161.575	VHF 79	Loodswezen Pilot Steenbank
161.700	VHF 20	Kreekraksluizen, Grevelingensluis, Sluis Stellendam
161.650	VHF 21	Radar Vlissingen, Radar Saeftinge
161.700	VHF 22	Bruggen kanaal door Walcheren en Dokbrug Vlissingen
161.700	VHF 22	Bruggen Bergen op Zoom, Krammersluis Philipsdam
161.750	VHF 23	Nederlandse Kustwacht (Renesse/Woensdrecht)
161.775	VHF 83	Nederlandse Kustwacht (Westkapelle)
162.150	VHF 31	Jachthavens Breskens, Kamperland, Cadzand
162.475	VHF 97	Nederlandse Kustwacht (onderling)

<https://deltascannerzeeland.nl/frequentielijst/>

Marifoonfrequenties:

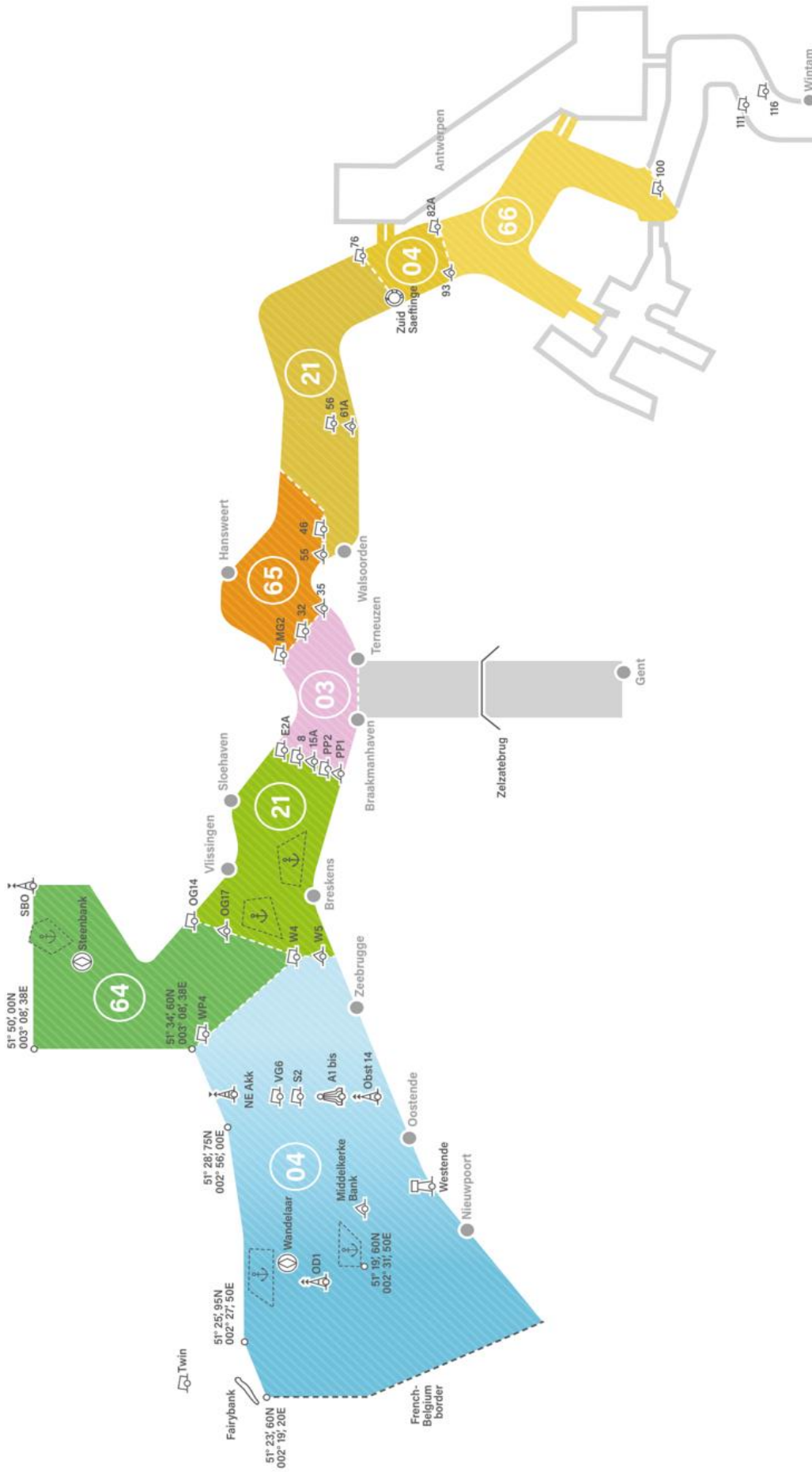
Kanaal	Freq. schip	Freq. wal	Kanaal	Freq. schip	Freq. wal
00	156.000	156.000	20	157.000	161.600
60	156.025	160.625	80	157.025	161.625
01	156.050	160.650	21	157.050	161.650
61	156.075	160.675	81	157.075	161.675
02	156.100	160.700	22	157.100	161.700
62	156.125	160.725	82	157.125	161.725
03	156.150	160.750	23	157.150	161.750
63	156.175	160.775	83	157.175	161.775
04	156.200	160.800	1027	157.350	157.350
64	156.225	160.825	87	157.375	157.375
05	156.250	160.850	1028	157.400	157.400
65	156.275	160.875	88	157.425	157.425
06	156.300	156.300	29	157.450	157.450
66	156.325	160.925	89	157.475	162.075
07	156.350	160.950	30	157.500	162.100
67	156.375	156.375	90	157.525	162.125
08	156.400	156.400	31	157.550	162.150
68	156.425	156.425	91	157.575	162.175
09	156.450	156.450	32	157.600	157.600
69	156.475	156.475	92	157.625	157.625
10	156.500	156.500	33	157.650	157.650
70	156.525	156.525	93	157.675	157.675
11	156.550	156.550	34	157.700	157.700
71	156.575	156.575	94	157.725	157.725
12	156.600	156.600	35	157.750	157.750
72	156.625	156.625	95	157.775	157.775
13	156.650	165.560	36	157.800	157.800
73	156.675	156.675	96	157.825	157.825
14	156.700	156.700	37	157.850	157.850
74	156.725	156.725	97	157.875	162.475
15	156.750	156.750	38	157.900	157.900
75	156.775	156.775	98	157.925	157.925
16	156.800	156.800	39	157.950	157.950
76	156.825	156.825	99	157.975	157.975
17	156.850	156.850	40	158.000	158.000
77	156.875	156.875	REDNED 1	164.990	164.990
18	156.900	161.500	REDNED 2	165.010	165.010
78	156.925	161.525	REDNED 3	165.170	165.170
19	156.950	161.550	REDNED 4	164.950	164.950
79	156.975	161.575	REDNED 5	164.590	164.590
			REDNED 6	160.290	160.290

Verkeerskanalen



Beaufort (kracht)	
bf	benaming
0	stil
1	zwak
2	zwak
3	matig
4	matig
5	vrij krachtig
6	krachtig
7	hard
8	stormachtig
9	storm
10	zware storm
11	zeer zware storm
12	orkaan

Radarkanalen



SCHEEPVAARTBERICHTEN				
TIME	VHF	T	VTS	GEBIED
00	11	NL	Havendienst Terneuzen	Kanaal Gent-Terneuzen
10	69	NL	Centrale Zeebrugge	Wandelaar-Zeebrugge-Vlissingen
15	4	E	Radar Zeebrugge	Wandelaar-Zeebrugge-Vlissingen
15	68	NL	Post Wemeldinge	Oosterschelde en Grevelingenmeer
30	12	NL	Centrale Zandvliet	Antwerpen-Hansweert-Terneuzen-Vlissingen
40	69	E	Centrale Zeebrugge	Wandelaar-Zeebrugge-Vlissingen
50	14	NL	Centrale Vlissingen	Steenbank-Zeebrugge-Vlissingen-Terneuzen-Hansweert
55	21	E	Radar Vlissingen	Steenbank-Zeebrugge-Vlissingen-Terneuzen-Hansweert
WEERSVERWACHTING NEDERLAND				
TIME	VHF	T	KUSTWACHT	GEBIED
08.05 UTC	23/83	NL	Den Helder	Kust- en ruime binnenwateren
13.05 UTC	23/83	NL	Den Helder	Kust- en ruime binnenwateren
19.05 UTC	23/83	NL	Den Helder	Kust- en ruime binnenwateren
23.05 UTC	23/83	NL	Den Helder	Kust- en ruime binnenwateren
VEILIGHEIDSBERICHTEN NEDERLAND				
03.33 UTC	23/83	NL	Den Helder	Kust- en ruime binnenwateren
07.33 UTC	23/83	NL	Den Helder	Kust- en ruime binnenwateren
11.33 UTC	23/83	NL	Den Helder	Kust- en ruime binnenwateren
15.33 UTC	23/83	NL	Den Helder	Kust- en ruime binnenwateren
19.33 UTC	23/83	NL	Den Helder	Kust- en ruime binnenwateren
23.33 UTC	23/83	NL	Den Helder	Kust- en ruime binnenwateren
WEERSVERWACHTING BELGIE				
TIME	VHF	T	KUSTWACHT	GEBIED
7.20	7	NL	Oostende	Vlaamse Kust
8.20 UTC	7	NL	Oostende	Vlaamse Kust
17.20 UTC	7	NL	Oostende	Vlaamse Kust
VEILIGHEIDSBERICHTEN BELGIE				
02.33 UTC	7	NL	Oostende	Vlaamse Kust
06.33 UTC	7	NL	Oostende	Vlaamse Kust
10.33 UTC	7	NL	Oostende	Vlaamse Kust
14.33 UTC	7	NL	Oostende	Vlaamse Kust
18.33 UTC	7	NL	Oostende	Vlaamse Kust
22.33 UTC	7	NL	Oostende	Vlaamse Kust



DELTA SCANNER ZEELAND

Dé scannersite voor Zuid-West Nederland

Delta Scanner Zeeland werkt samen met de lokale VERON en VRZA om ook de luisterhobby te blijven promoten, want er is nog genoeg te beluisteren!

Meeluisteren met voorbijvarende luchtballonnen en binnenvaartschepen, loodsboten en reddingboten, sportvliegtuigen en verkeersvliegtuigen, sleepboten en tankschepen, buschauffeurs en ferry's, tankbedrijven, bouwbedrijven en verkeersregelaars

Nog steeds kun je met een scanner en/of breedband ontvanger meeluisteren naar allerlei overheidsdiensten, luchtvaart, scheepvaart, zendamateurs, havendiensten, de kustwacht, de Life Line helikopters, omroepstations en heel veel meer. Daarvoor is deze website die informatie geeft voor luisteraars in Zuid West Nederland. Want zover strijkt het gebied met informatie: de Zeeuwse delta, Vlaanderen, West-Brabant en de havens van Antwerpen, de zuidelijke regio Rijnmond en de Zuid-Hollandse Eilanden.

Op de website <https://deltascannerzeeland.nl/> kun je ook informatie vinden over scanners, informatie over P2000, online scanners, capcodes, een handige frequentielijst (pdf), kaarten van vaar- en luchtwegen etc. Verder informatie over zendamateurs (frequenties en verenigingen) maar ook waar je live kunt meekijken met bijvoorbeeld airport webcams, live scheepvaart en live vliegtuigen maar ook live treinen, live bussen en (snel)trams.

Sinds 2023 zijn er voor de UBC125 scanner indelingen voorbereid in Excel en rsf files.

Informatie over regionale zendamateurs vind je o.a. op onderstaande websites:

VRZA	afdeling Zuid West Nederland	https://pi4zwn.nl/
VERON	afdeling Walcheren	http://pi4wal.nl/
VERON	afdeling Zeeuws-Vlaanderen	http://pi4zvl.nl/
VERON	afdeling Bergen op Zoom	http://pi4boz.nl/
VERON	afdeling Hoekse Waard	https://a52.veron.nl/tag/pi4cq/
	Dordtse Electronica Club	https://pi4dec.nl/
	Electronica Club Zuid Hollandse Eilanden	https://ezhe.nl/
	Delta Radio Communicatie Ondersteuning	https://drco.nl/
	Stichting Repeatergroep Walcheren	https://srgw.nl/



Luchtvaartfrequenties:

Zeeland

119.2500 MHz	EHMZ Vliegveld Midden-Zeeland	(Tower)
122.8000 MHz	EHMZ Skydive Midden-Zeeland	
123.1000 MHz	Kustwacht / SAR	
124.3000 MHz	Amsterdam Info Noord v Oosterschelde	tot FL 055
132.3500 MHz	Dutch Mil Zuid v Oosterschelde	tot FL 055
444.1375 MHz	EHMZ Vliegveld Midden-Zeeland	(lokaal)

West-Brabant

120.4250 MHz	EHW0 Vliegveld Woensdrecht	(Tower)
123.5750 MHz	EHW0 Vliegveld Woensdrecht	(Approach)
132.3500 MHz	Dutch Mil FIR West-Brabant	tot FL 055

Rotterdam

118.2000 MHz	EHRD Vliegveld Rotterdam	(Tower)
122.9916 MHz	EHRD Vliegveld Rotterdam	(Approach)

Vlaanderen

118.1750 MHz	EBOS vliegveld Oostende	(Tower)
120.6000 MHz	EBOS vliegveld Oostende	(Approach)
121.0500 MHz	EBFN vliegveld Koksijde	(Approach)
122.1000 MHz	EBFN vliegveld Koksijde	(Tower)
126.9000 MHz	Brussel Info	FL 000 - FL 055
128.8000 MHz	North LOW	FL 055 - FL 245
131.1000 MHz	West LOW	FL 055 - FL 245
132.2000 MHz	KOKSY Sector (Z-Vlaanderen + BEL)	FL 245 - FL 355
132.7500 MHz	KOKSY Sector (Z-Vlaanderen + BEL)	FL 355 +

Algemeen

120.8750 MHz	General Discrete Emergency Frequentie	
121.2000 MHz	Amsterdam Approach (TMA West)	
121.5000 MHz	Noodfrequentie	
122.2500 MHz	Ballonvaart	
122.5000 MHz	Zweefvliegen Haamstede	
123.3500 MHz	Zweefvliegtuigen Axel	
123.8500 MHz	Amsterdam Radar South outbound	FL 055 - FL 245
125.7500 MHz	Amsterdam Radar West (Noordzee)	FL 055 - FL 245
130.9500 MHz	Amsterdam Radar South inbound	FL 055 - FL 245
132.0833 MHz	DELTA Low Sector	FL 365 - FL 660
135.5166 MHz	DELTA Middle Sector	FL 335 - FL 365
135.9583 MHz	DELTA High Sector	FL 245 - FL 335

<https://deltascannerzeeland.nl/luchtvaart/>

EASTBOUND			WESTBOUND		
IFR	WEST TO EAST		IFR	EAST TO WEST	
FL	feet	meters	FL	feet	meters
10	1000	304	20	2000	609
30	3000	914	40	4000	1219
50	5000	1524	60	6000	1828
70	7000	2133	80	8000	2438
90	9000	2750	100	10000	3048
110	11000	3352	120	12000	3657
130	13000	3962	140	14000	4267
150	15000	4572	160	16000	4876
170	17000	5181	180	18000	5486
190	19000	5791	200	20000	6096
210	21000	6400	220	22000	6705
230	23000	7010	240	24000	7315
250	25000	7620	260	26000	7924
270	27000	8229	280	28000	8534
290	29000	8839	300	30000	9144
310	31000	9448	320	32000	9753
330	33000	10058	340	34000	10363
350	35000	10668	360	36000	10972
370	37000	11277	380	38000	11582
390	39000	11887	400	40000	12192
410	41000	12496	420	42000	12801
430	43000	13106	440	44000	13411
450	45000	13716	460	46000	14020
470	47000	14325	480	48000	14630
490	49000	14935	500	50000	15240
510	51000	15544	520	52000	15849
530	53000	16154	540	54000	16459
550	55000	16764	560	56000	17068
570	57000	17373	580	58000	17678
590	59000	17983	600	60000	18288
610	61000	18592	620	62000	18897
630	63000	19202	640	64000	19507
650	65000	19812	660	66000	20116

Luchtvaartruim Zuid West Nederland gezien vanaf het westen (Noordzee):

FL 660 / 20116 M	DELTA HIGH SECTOR 132.08333 MHz	KOKSY HIGH SECTOR 132.750 MHz	FL 660 / 20116 M
FL 365 / 11125 M FL 355 / 10820 M	DELTA MIDDLE SECTOR 135.51666 MHz		FL 365 / 11125 M FL 355 / 10820 M
FL 335 / 10210 M	DELTA SECTOR 135.95833 MHz	KOKSY SECTOR 132.200 MHz	FL 335 / 10210 M
FL 245 / 7467 M fl.195 / 5943 M	A'DAM RADAR INBOUND A'DAM RADAR CTA SOUTH 1 A'DAM RADAR CTA WEST A'DAM APPROACH TMA WEST	NORTH LOW 128.800 MHz WEST LOW 131.100 MHz	FL 245 / 7467 M fl.195 / 5943 M
FL 055 / 1676 M FL 045 / 1371 M FL 035 / 1066 M FL 030 / 914 M FL 025 / 762 M FL 015 / 457 M GROUND / 0 M	TMA WEST A'DAM APPROACH 121.200 MHz TMA WEST A'DAM APPROACH 124.300 MHz A'DAM INFO 124.300 MHz A'DAM INFO 128.500 MHz NOORDZEE ROTTERDAM APPROACH 122.99166 MHz T 118.200 MHz T 118.275 MHz 18R T 118.100 MHz 18C T 119.225 MHz 18L etc. A'DAM INFO 124.300 MHz A'DAM INFO 128.500 MHz NOORDZEE EHRD ROTTERDAM R'DAM CTR EHAM SCHIPHOL A'DAM CTR A'DAM TMA 1 ZUID-HOLLAND A'DAM TMA 1	BRUSSELS INFORMATION 126.900 MHz DUTCH MIL 132.350 MHz A'DAM INFO 128.500 MHz NOORDZEE WALCH/BEVELAND TMA G2 Z-VLAANDEREN TMA G2 VLAANDEREN (B)	FL 055 / 1676 M FL 045 / 1371 M FL 035 / 1066 M FL 030 / 914 M FL 025 / 762 M FL 015 / 457 M GROUND / 0 M

Luchtvaartruim Zuid West Nederland gezien vanaf het zuiden:

FL 660 / 20116 M	DELTA HIGH SECTOR 132.08333 MHz	FL 660 / 20116 M																				
FL 365 / 11125 M FL 355 / 10820 M	DELTA MIDDLE SECTOR 135.51666 MHz	FL 365 / 11125 M FL 355 / 10820 M																				
FL 335 / 10210 M	DELTA SECTOR 135.95833 MHz	FL 335 / 10210 M																				
FL 245 / 7467 M fl 195 / 5943 M	A'DAM RADAR INBOUND A'DAM RADAR CTA SOUTH 1 130.950 MHz 123.850 MHz	FL 245 / 7467 M fl 195 / 5943 M																				
	A'DAM RADAR WEST 125.750 MHz																					
	A'DAM RADAR INBOUND A'DAM RADAR CTA SOUTH 1 A'DAM RADAR CTA SOUTH 2 ROTTERDAM APPROACH 130.95000 MHz 123.85000 MHz 122.99166 MHz																					
FL 055 / 1676 M FL 045 / 1371 M FL 035 / 1066 M FL 030 / 914 M FL 025 / 762 M FL 015 / 457 M GROUND / 0 M	<table border="1"> <tr> <td>A 121.050 MHz</td> <td>A 120.600 MHz</td> <td>#</td> <td>132.350 MHz DUTCH MIL</td> <td>TMZ-G2</td> <td>A 123.575 MHz</td> <td>TMZ-G1 132.350 MHz DUTCH MIL</td> <td>EHMZ ARNEMUIDEN</td> <td>EHWO WOENSRECHT</td> <td>EHSE SEPPE</td> </tr> <tr> <td>T 122.100 MHz G 122.100 MHz</td> <td>T 118.175 MHz G 121.975 MHz</td> <td>#</td> <td># 126.90 MHz BRUSSELS INFO</td> <td>T 119.250 MHz</td> <td>T 120.425 MHz G 283.125 MHz</td> <td>T 120.665 MHz</td> <td></td> <td></td> <td></td> </tr> </table>	A 121.050 MHz	A 120.600 MHz	#	132.350 MHz DUTCH MIL	TMZ-G2	A 123.575 MHz	TMZ-G1 132.350 MHz DUTCH MIL	EHMZ ARNEMUIDEN	EHWO WOENSRECHT	EHSE SEPPE	T 122.100 MHz G 122.100 MHz	T 118.175 MHz G 121.975 MHz	#	# 126.90 MHz BRUSSELS INFO	T 119.250 MHz	T 120.425 MHz G 283.125 MHz	T 120.665 MHz				FL 055 / 1676 M FL 045 / 1371 M FL 035 / 1066 M FL 030 / 914 M FL 025 / 762 M FL 015 / 457 M GROUND / 0 M
A 121.050 MHz	A 120.600 MHz	#	132.350 MHz DUTCH MIL	TMZ-G2	A 123.575 MHz	TMZ-G1 132.350 MHz DUTCH MIL	EHMZ ARNEMUIDEN	EHWO WOENSRECHT	EHSE SEPPE													
T 122.100 MHz G 122.100 MHz	T 118.175 MHz G 121.975 MHz	#	# 126.90 MHz BRUSSELS INFO	T 119.250 MHz	T 120.425 MHz G 283.125 MHz	T 120.665 MHz																
	EBFN KOKSIJDE WEST VLAANDEREN		CADZAND	ZEELAND	NOORD - BRABANT																	

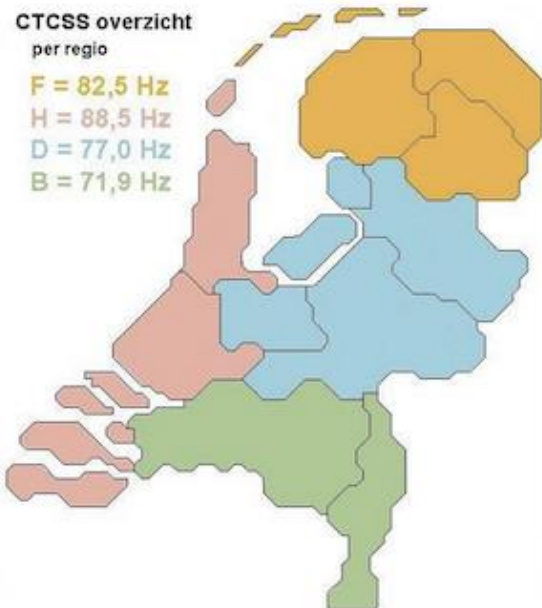
Repeaters

<i>Frequentie</i>	<i>Call</i>	<i>TQ</i>	<i>Type</i>	<i>Shift</i>	<i>Zender(s)</i>
145.5750	PI3UTR	77,0	Boven-Reg.	-0,6	Goes, Utrecht, IJsselstein
145.6000	PI3ZVL	88,5	Regionaal	-0,6	Overslag
145.6125	ON0GB	79,7	Regionaal	-0,6	Brakel
145.6250	PI3BOZ	88,5	Regionaal	-0,6	Bergen op Zoom
145.6500	ON0WV	79,7	Regionaal	-0,6	Brugge
145.6500	PI3BRD	71,9	Regionaal	-0,6	Breda
145.6750	PI3RTD	88,5	Regionaal	-0,6	Rotterdam
145.7000	ON0OV	79,7	Regionaal	-0,6	Gent
145.7625	ON0ANR	131,8	Regionaal	-0,6	Antwerpen
145.7750	PI3GOE	88,5	Regionaal	-0,6	Goes
145.7875	ON0DP	131,8	Regionaal	-0,6	Boom (Antwerpen-Zuid)

<i>Frequentie</i>	<i>Call</i>	<i>TQ</i>	<i>Type</i>	<i>Shift</i>	<i>Zender(s)</i>
430.1250	PI2NOS	geen	Boven-Reg.	+1,6	Goes, Lelystad, Sittard
430.3000	PI2RTD	88,5	Regionaal	+1,6	Rotterdam
430.3625	PI1DEC	88,5	Regionaal	+1,6	Dordrecht
438.0375	PI2VLI	DMR	Regionaal	-7,6	Vlissingen CC1
438.1250	PI3BOZ	DSTAR	Regionaal	-7,6	Bergen op Zoom
438.2750	PI2BOZ	88,5	Regionaal	-7,6	Bergen op Zoom
438.4000	PI1ZLD	88,5	Regionaal	-7,6	Zierikzee
438.4375	PI2VLI	88,5	Regionaal	-7,6	Vlissingen
438.5000	PI2BOZ	C4FM	Regionaal	-7,6	Bergen op Zoom
438.7250	ON0ONZ	79,7	Regionaal	-7,6	Knokke-Heist
438.7750	ON0WLD	79,7	Regionaal	-7,6	Sint-Niklaas
438.9875	ON0AND	DMR	Regionaal	-7,6	Antwerpen CC 1
439.2500	ON0GRC	79,7	Regionaal	-7,6	Gent
439.3000	ON0OST	79,7	Regionaal	-7,6	Oostende
439.3500	ON0AN	131,8	Regionaal	-7,6	Antwerpen

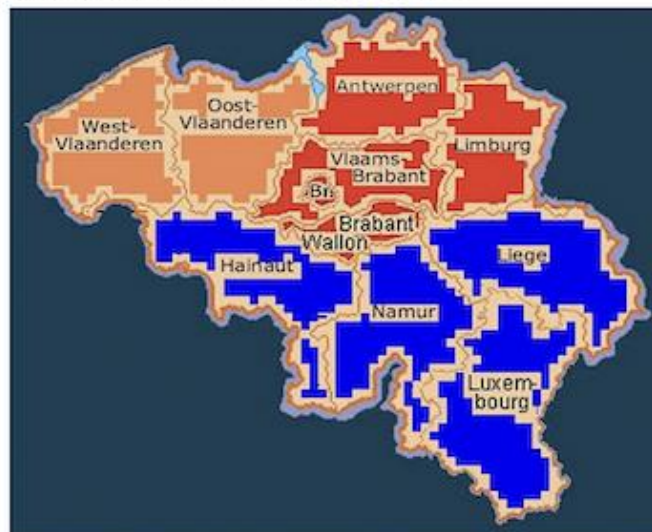
CTCSS overzicht per regio

F = 82,5 Hz
H = 88,5 Hz
D = 77,0 Hz
B = 71,9 Hz



Zone 1: A 131.8 Hz Antwerpen, Limburg, Vlaams-Brabant, Waals-Brabant
Zone 2: C 74.4 Hz Henegouwen, Namen, Luik en Luxemburg.
Zone 3: E 79.7 Hz West-Vlaanderen en Oost-Vlaanderen.

(1): Sommige repeaters gebruiken nog de CTCSS-frequentie 67,0 Hz.



Flora – Fauna:

PAFF-0080 – Kapelse en Yerseke Moer JO21AL
PAFF-0113 – Kop van Schouwen JO11OQ
PAFF-0114 – Manteling van Walcheren JO11SO
PAFF-0015 – Oosterschelde JO21CK

Voorkeurfrequenties:

Phone:	3.744	7.144	14.244	18.144	21.244	24.944	28.444
CW:	3.544	7.024	14.044	18.084	21.044	24.894	28.044
			10.124				

SOTA en POTA:

Geen vaste voorkeurs-frequenties

ORP:

Voorkeurfrequenties:

Phone:	3.690	7.090	14.285	18.130	21.285	24.950	28.360
CW:	3.560	7.030	14.060	18.096	21.060	24.906	28.060

BAND	CW	SSB	FM
160	1.810 – 1.840	1.843 – 1.880	
80	3.500 – 3.570	3.600 – 3.800	
60	5.350 – 5.354	5.354 – 5.366	
40	7.000 – 7.040	7.060 – 7.200	
30	10.100 – 10.130	---	
20	14.000 – 14.070	14.100 – 14.350	
17	18.068 – 18.095	18.111 – 18.168	
15	21.000 – 21.070	21.150 – 21.450	
12	24.890 – 24.915	24.931 – 24.990	
10	28.000 – 28.070	28.320 – 29.000	29.100 – 29.700
6	50.000 – 50.100	50.100 – 50.500	50.500 – 52.000
4	70.000 – 70.050	70.050 – 70.250	70.250 – 70.500
2	144.000 – 144.150	144.180 – 144.400	145.000 – 145.975
0,7	432.000 – 432.100	432.100 – 432.400	433.400 – 433.575

Bakens die we in Zeeland meestal wel kunnen horen

Band	Call	Locatie	Locator	Hoogte	Vermogen	Frequentie
6 m	PI7SIX	Rotterdam	JO21fv	105	50	50,0050
6 m	PI7SIX	Rotterdam	JO21fv	105	50	50,4250
4 m	PI7RTD	Rotterdam	JO21fv	105	10	70,0700
2 m	PI7CIS	Scheveningen	JO22dc	40	45	144,4160
2 m	GB3VHF	Fairseat	JO01eh	205	30	144,4300
2 m	PI7BRG	Zevenbergen	JO21hp	8	10	144,4310
2 m	ON0VHF	Louvain la Neuve	JO20hp	141	20	144,4180
2 m	F5ZAM	Blaringhem	JO10eq	99	10	144,4250
70 cm	PI7CIS	Scheveningen	JO22dc	42	75	432,4160
70 cm	PI7HVN	Heerenveen	JO22ww	52	1	432,4230
70 cm	GB3UHF	Fairseat	JO01eh	242	30	432,4300
70 cm	ON0VHF	Louvain la Neuve	JO20hp	141	20	432,4500
70 cm	F5ZSG	Quistinic	JO10uh	165	20	432,4590
23 cm	PI7GHZ	Wemeldinge	JO11wm	13	1	1296,8150
23 cm	GB3MHZ	Martlesham	JO02pb	80	50	1296,8300
23 cm	ON0VHF	Louvain la Neuve	JO20hp	141	8	1296,8750
23 cm	PI7ALK	Alkmaar	JO22ip	38	5.0	1296,9180
23 cm	PI7QHN	Zandvoort	JO22gj	4	*	1296,9100
13 cm	GB3MHZ	Martlesham	JO02pb	85	25	2320,8300
13 cm	PI7RTD	Rotterdam	JO21fv	105	15.0	2320,8570
13 cm	F5ZNI	Belleuse	JN19bq	140	10	2320,9000
13 cm	PI7ALK	Alkmaar	JO22ip	38	5.0	2320,9200

Benelux DX Club

De Benelux DX Club is in November 1961 opgericht door en voor luister amateurs in de Benelux. Binnen de BDXC worden alle vormen van radio luisteren vertegenwoordigd. Of het nu over omroepzenders gaat of utility stations. Je vindt het bij de BDXC.

Het maandelijkse bulletin verschijnt als pdf bestand op de website en is daar te downloaden. In het bulletin komen maandelijks diverse rubrieken aan bod. Van Shortwave tot DAB+ en van Techniek tot Utility. Voor ieder wat wils.

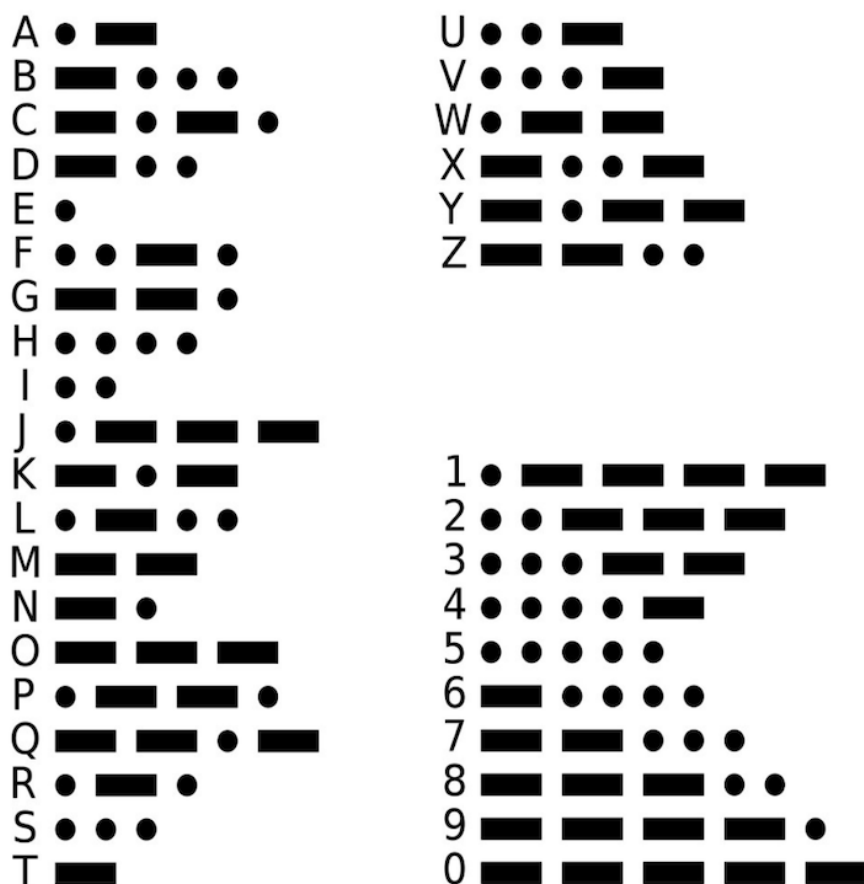
De website biedt naast de mogelijkheid om het bulletin te downloaden nog veel meer informatie. Zo bezitten we een ruime bibliotheek waar vele boeken gratis voor leden zijn te downloaden. Ook is er een uitgebreid audio archief met oude opnames maar ook recente, door leden opgenomen, opnames..

Kijk ook eens op <https://www.bdxc.nl/>

Lange golfbakens die we in Zeeland meestal kunnen horen

Mode: AM Narrow

Freq. kHz	Call	Locatie
17.2	SAQ	Grimeton (S)
060	MSF	Tijdsein in Cumbria (GB)
077,5	DCF	Tijdsein in Mainflingen (D)
290	OB	Brussel (B)
307	DIK	Diekirch (LX)
310	LMA	Lima (D)
314	OZ	Brussel (B)
321	ABY	Abbeville (F)
327	MVC	Merville (F)
352,5	DD	Middelkerke (B)
355	ONW	Antwerpen (B)
360	MAK	Machel (B)
362,5	SND	Southend on Sea (GB)
373	NW	Nieuwstad (NL)
375	OO	Oostende (B)
399,5	ONO	Oostende (B)
402	OP	Brussel (B)
404	MRV	Merville (F)
418	MK	Calais (F)

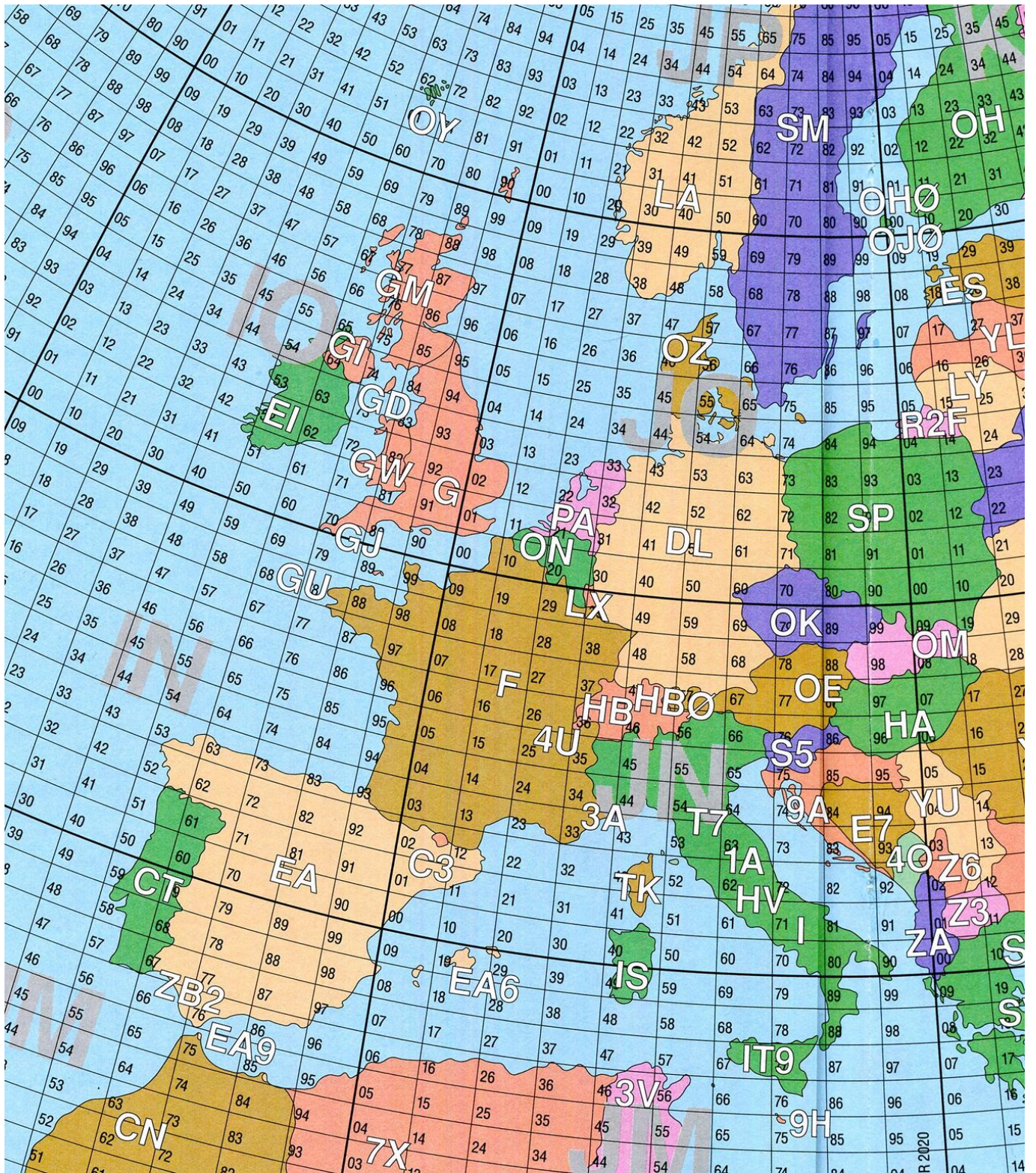


Prefix	Entity	Cnt.	Prefix	Entity	Cnt.
1A0	Sov.Mil.Order of Malta	EU	6T	Sudan	AF
1B	Cyprus	EU	6V, 6W	Senegal	AF
1S	Spratly Is.	AS	6Y	Jamaica	NA
2E, 2D, 2I, 2J, 2M, 2U, 2W	England	EU	7J, 7K, 7L, 7M, 7N	Japan	AS
3A	Monaco	EU	7O	Yemen	AS
3B6, 7	Agalega & St. Brandon	AF	7P	Lesotho	AF
3B8	Mauritius	AF	7Q	Malawi	AF
3B9	Rodriguez I.	AF	7T, 7U, 7V, 7W, 7X, 7Y	Algeria	AF
3C	Equatorial Guinea	AF	8A - 8I	Indonesia	AS
3C0	Pagalu I.	AF	8J	Japan	AS
3D2/F	Fiji	OC	8O	Botswana	AF
3D2/C	Conway Reef	OC	8P	Barbados	NA
3D2/R	Rotuma I.	OC	8Q	Maldives	AS/AF
3DA0	Swaziland	AF	8R	Guyana	SA
3V	Tunisia	AF	8S	Sweden	EU
3W	Vietnam	AS	8T, 8U, 8V, 8W	India	AS
3X	Guinea	AF	8Z	Saudi Arabia	AS
3Y	Bouvet Isl., Peter Isl.	AF	9A	Croatia	EU
3Z	Poland	EU	9D	Iran	AS
4A, 4B, 4C	Mexico	SA	9E, 9F	Ethiopia	AF
4D, 4F, 4I	Philippines	AS	9G	Ghana	AF
4J, 4K	Azerbaijan	AS	9H	Malta	EU
4J1	Malj Vysotskij	EU	9I-9J	Zambia	AF
4L	Georgia	AS	9K	Kuwait	AS
4M	Venezuela	SA	9L	Sierra Leone	AF
4N1, 4N6 - 4N9	Yugoslavia	EU	9M2, 4	West Malaysia	AS
4N4	Bosnia Herzegovina	EU	9M6, 8	East Malaysia	OC
4N5	Macedonia	EU	9N	Nepal	AS
4O1	Yugoslavia	EU	9Q, 9R, 9S, 9T	Dem.Rep. Of Congo	AF
4O1, 4O6 - 4O9	Bosnia Herzegovina	EU	9U	Burundi	AF
4O5	Macedonia	EU	9V	Singapore	AS
4P, 4Q, 4R, 4S	Sri Lanka	AS	9X	Rwanda	AF
4T	Peru	SA	9Y-9Z	Trinidad & Tobago	SA
4U_ITU	ITU HQ Geneva	EU	A15	Abu Ail	AS
4U_UN	United Nations HQ	NA	A2	Botswana	AF
4V	Haiti	NA	A3	Tonga	OC
4W6	East Timor	OC	A4	Oman	AS
4X, 4Z	Israel	AS	A5	Bhutan	AS
5A	Libya	AF	A6	United Arab Emirates	AS
5B	Cyprus	AS	A7	Qatar	AS
5C, 5D, 5E	Libya	AF	A8	Leberia	
5H-5I	Tanzania	AF	A9	Bahrain	AS
5J, 5K	Columbia	SA	AA	United States of America	NA
5L	Liberia	AF	AM, AN, AO	Spain	EU
5N-5O	Nigeria	AF	AP-AS	Pakistan	AS
5R-5S	Madagascar	AF	AT, AU, AV, AW	India	AS
5T	Mauritania	AF	AX	Australia	OC
5U	Niger	AF	AY, AZ	Argentina	SA
5V	Togo	AF	BA BU	China	AS
5W	Western Samoa	OC	BS7	Scarborough Reef	AS
5X	Uganda	AF	BV	Taiwan	AS
5Y-5Z	Kenya	AF	BV9P	Pratas	AS
6D, 6E, 6F	Mexico	SA	BW - BZ	China	AS
6K	South Korea	AS	C2	Nauru	OC
6O	Somalia	AF	C3	Andorra	EU

Prefix	Entity	Cnt.	Prefix	Entity	Cnt.
C4	Cyprus	EU	FO	Marquesas I.	OC
C5	The Gambia	AF	FP	St. Pierre & Miquelon	NA
C6	Bahamas	NA	FR/G	Glorioso Is.	AF
C8-9	Mozambique	AF	FR/J, E	Juan de Nova, Europa	AF
CA-CE	Chile	SA	FR	Reunion	AF
CE0	Easter I.	SA	FR/T	Tromelin I.	AF
CE0	Juan Fernandez Is.	SA	FS	Saint Martin	NA
CE0	San Felix & San Ambrosio	SA	FT8W	Crozet I.	AF
CE9/KC4	Antardica	AN	FT8X	Kerguelen Is.	AF
CF, CG, CH, CI, CK	Canada	NA	FT8Y	Antardica	
CL, CM, CO	Cuba	NA	FT8Z	Amsterdam & St. Paul Is.	AF
CN	Morocco	AF	FW	Wallis & Futuna Is.	OC
CP	Bolivia	SA	FY	French Guiana	SA
CQ, CR, CS, CT	Portugal	EU	G, GX	England	EU
CT3	Madeira Is.	AF	GD, GT	Isle of Man	EU
CJ	Azores	EU	GI, GN	Northern Ireland	EU
CV-CX	Uruguay	SA	GJ, GH	Jersey	EU
CY, CX	Canada	NA	GM, GS	Scotland	EU
CY0	Sable I.	NA	GU, GP	Guernsey	EU
CY9	St. Paul I.	NA	GW, GC	Wales	EU
D2, D3	Angola	AF	H2	Cyprus	EU
D4	Cape Verde	AF	H3	Panama	NA
D6	Comoros	AF	H4	Solomon Is.	OC
D7, D8, D9	South Korea	AS	H40	Temotu Province	OC
DA-DL	Fed. Rep. of Germany	EU	H5	South Africa	AF
DS, DT	South Korea	AS	H6, H7	Nicaragua	SA
DU-DZ	Philippines	OC	H8, H9	Panama	SA
E2	Thailand	AS	HA, HG	Hungary	EU
E3	Eritrea	AF	HB	Switzerland	EU
E4	Palestine	AS	HB0	Liechtenstein	EU
EA-EH	Spain	EU	HC-HD	Ecuador	SA
EA6-EH6	Balearic Is.	EU	HC8-HD8	Galapagos Is.	SA
EA8-EH8	Canary Is.	AF	HH	Haiti	NA
EA9-EH9	Ceuta & Melilla	AF	HI	Dominican Republic	NA
EI-EJ	Ireland	EU	HJ-HK	Colombia	SA
EK	Armenia	AS	HK0	Malpelo I.	SA
EL	Liberia	AF	HK0	San Andres & Providenda	NA
EM, EN, EO	Ukraine	EU	HL, HM	South Korea	AS
EP-EQ	Iran	AS	HN	Iraq	AS
ER	Moldovia	EU	HO-HP	Panama	NA
ES	Estonia	EU	HQ-HR	Honduras	NA
ET	Ethiopia	AF	HS	Thailand	AS
EU, EV, EW	Belarus	EU	HU	El Salvador	SA
EX	Kyrgystan	AS	HV	Vatican	EU
EY	Tajikistan	AS	HW, ZX, HY	France	EU
EZ	Turkmenistan	AS	HZ	Saudi Arabia	AS
F, FB, FD, FE, FF, FU, FW	France	EU	I, IA - IZ	Italy	EU
FG	Guadeloupe	NA	IS, IM	Sardinia	EU
FJ	Saint Barthelemy	NA	J2	Djibouti	AF
FH	Mayotte	AF	J3	Grenada	NA
FK	New Caledonia	OC	J4	Greece	EU
FM	Martinique	NA	J5	Guinea-Bissau	AF
FO	Austral I.	OC	J6	St. Luda	NA
FO	Clipperton I.	NA	J7	Dominica	NA
FO	French Polynesia	OC	J8	St. Vincent	NA

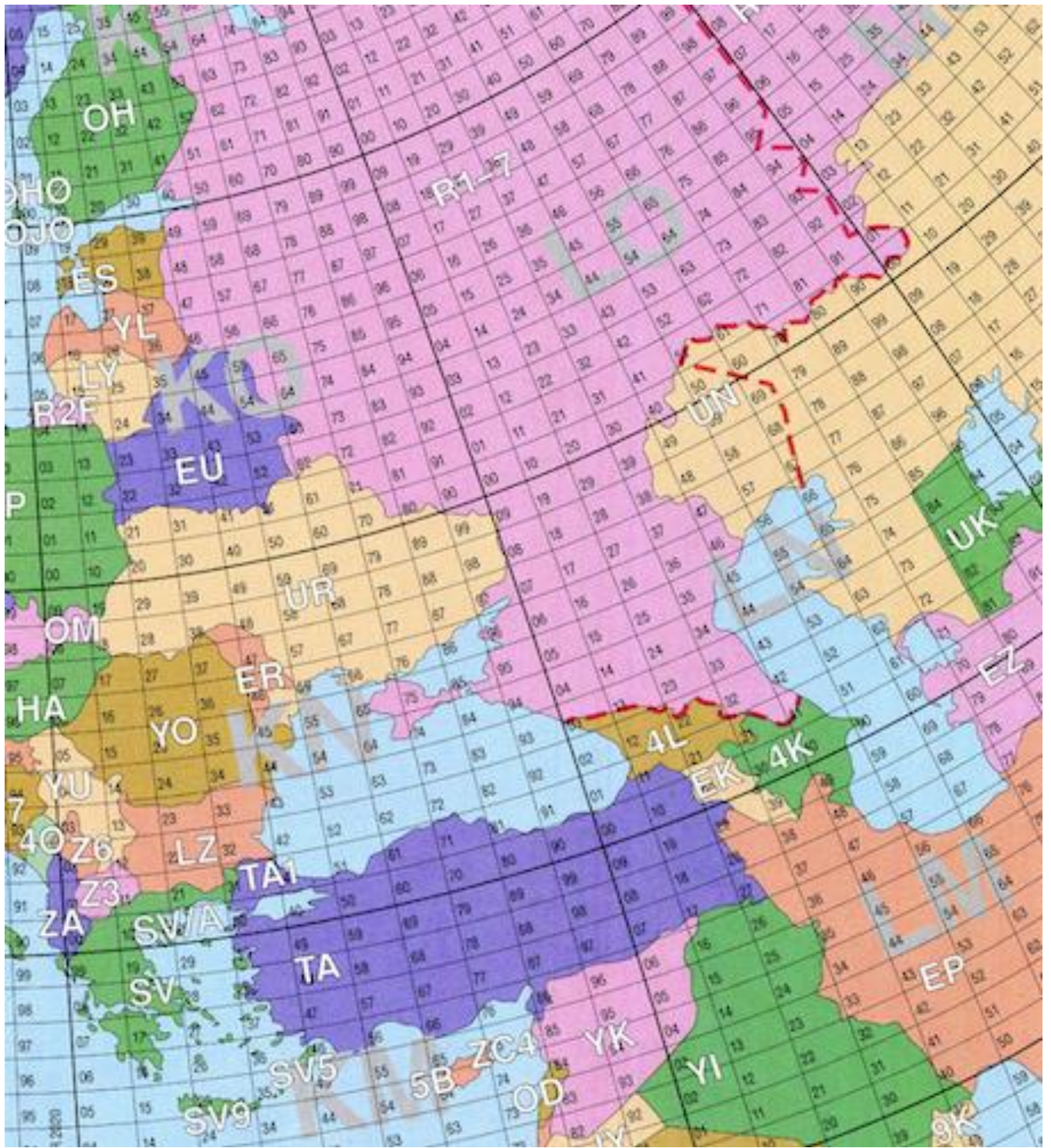
Prefix	Entity	Cnt.	Prefix	Entity	Cnt.
JA-JS	Japan	AS	PK, PO	Indonesia	AS
JD1	Minami Torishima	OC	PP-PY	Brazil	SA
JD1	Ogasawara	AS	PP0-PY0	Fernando de Noronha	SA
JT-JV	Mongolia	AS	PP0-PY0	St. Peter & St. Paul Rock	SA
JW	Svalbard	EU	PP0-PY0	Trindade & Martim Vaz Is.	SA
JX	Jan Mayen	EU	PZ	Suriname	SA
JY	Jordan	AS	R1FJ	Franz Josef Land	EU
K,W,N, AA-AK	United States of America	NA	R, RA - RZ	Russia	EU
KG4	Guantanamo Bay	NA	R9, RA9 - RZ9	Asiatic Russia	AS
KH0	Mariana Is.	OC	S0	Western Sahara	AF
KH1	Baker & Howland Is.	OC	S2, S3	Bangladesh	AS
KH2	Guam	OC	S4, S8	South Africa	AF
KH3	Johnston I.	OC	S5, YU3	Slovenia	EU
KH4	Midway I.	OC	S7	Seychelles	AF
KH5	Palmyra & Jarvis Is.	OC	S9	Sao Tome & Prindipe	AF
KH5K	Kingman Reef	OC	SA-SM	Sweden	EU
KH6	Hawaii	OC	SN-SR	Poland	EU
KH7	Kure I.	OC	ST	Sudan	AF
KH8	American Samoa	OC	SU	Egypt	AF
KH8SI	Swain's I.	OC	SV-SZ	Greece	EU
KH9	Wake I.	OC	SV/A	Mount Athos	EU
KL7	Alaska	NA	SV5	Dodecanese	EU
KP1	Navassa I.	NA	SV9	Crete	EU
KP2	Virgin Is.	NA	T2	Tuvalu	OC
KP4	Puerto Rico	NA	T3	Centr. East Kiribati	
KP5	Desecheo I.	NA	T30	W. Kiribati (Gilbert Is.)	OC
L1 - L9	Argentina	SA	T31	C. Kiribati (Brit. Phoenix Is.)	OC
LA-LN	Norway	EU	T32	E. Kiribati (Line Is.)	OC
LO-LW	Argentina	SA	T33	Banaba I. (Ocean I.)	OC
LX	Luxembourg	EU	T4	Cuba	SA
LY	Lithuania	EU	T5	Somalia	AF
LZ	Bulgaria	EU	T6	Afghanistan	AS
M, MC - MX	England	EU	T7	San Marino	EU
N	United States of America	NA	T8	South Africa	AF
OA-OC	Peru	SA	T88	Belau (W. Caroline Is.)	OC
OD	Lebanon	AS	T9	Bosnia-Herzegovina	EU
OE	Austria	EU	TA-TC	Turkey	EU/AS
OF-OI	Finland	EU	TF	Iceland	EU
OF0, OGO, OH0	Aland Is.	EU	TG, TD	Guatemala	NA
OJ0, OH0M	Market Reef	EU	TH, TM, TO, TQ, TV - TX	France	EU
OK-OL	Czech Republic	EU	TI, TE	Costa Rica	NA
OM	Slovak Republic	EU	TI9	Cocos I.	NA
ON-OT	Belgium	EU	TJ	Cameroon	AF
OX	Greenland	NA	TK	Corsica	EU
OY	Faroe Is.	EU	TL	Central Africa Rep.	AF
OZ	Denmark	EU	TN	Congo	AF
P2	Papua New Guinea	OC	TR	Gabon	AF
P3	Cyprus	EU	TT	Chad	AF
P4	Aruba	SA	TU	Cote d'Ivoire	AF
P5 - P9	North Korea	AS	TX0	Chesterfield Is.	OC
PA - PI	Netherlands	EU	TY	Benin	AF
PJ2	Curaçao	SA	TZ	Mali	AF
PJ4	Bonaire	SA	UA-UI1,3,4,6	European Russia	EU
PJ5,6	Saba & St.Eustatius	NA	UA2	Kaliningrad	EU

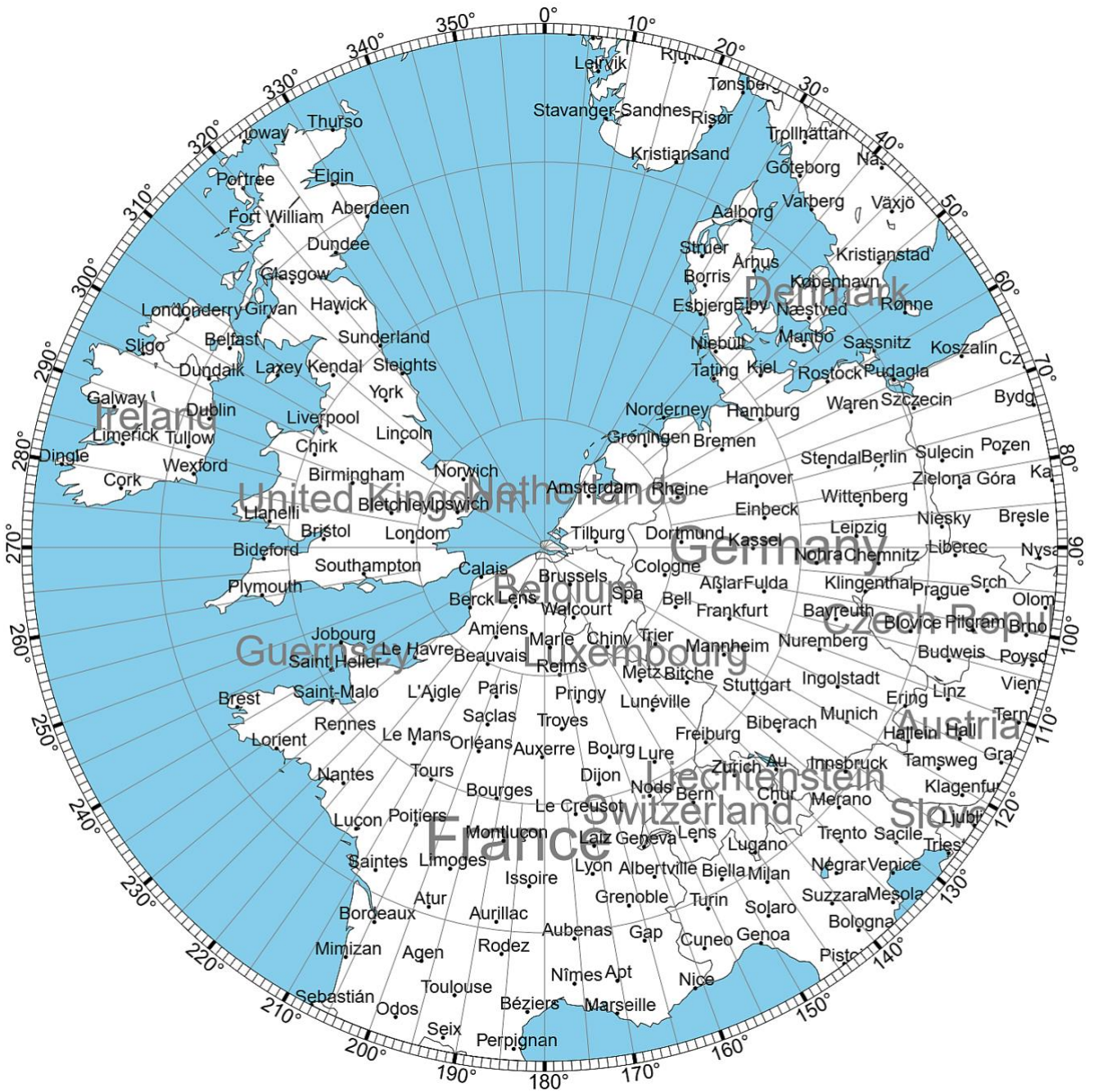
Prefix	Entity	Ont.	Prefix	Entity	Ont.
UJ-UM	Uzbekistan	AS	YI	Iraq	AS
UN-UQ	Kazakhstan	AS	YJ	Vanuatu	OC
UR-UZ, EM-EO	Ukraine	EU	YK	Syria	AS
V2	Antigua & Barbuda	NA	YL	Latvia	EU
V3	Belize	NA	YM	Turkey	EU
V4	St.Kitts & Nevis	NA	YN	Nicaragua	NA
V51, V52	Namibia	AF	YO-YR	Romania	EU
V6	Micronesia (E.Caroline Is.)	OC	YS	El Salvador	NA
V7	Marshall Is.	OC	YT-YU, YZ	Serbia	EU
V8	Brunei	OC	YV-YY	Venezuela	SA
VA - VE, VO, VY	Canada	NA	YV0	Aves I.	NA
VK, VL, VM, VN	Australia	OC	Z2	Zimbabwe	AF
VK0	Heard I.	AF	Z3	Macedonia	EU
VK0	Macquarie I.	OC	Z8	South Sudan (Rep.Of)	AF
VK9C	Cocos-Keeling Is.	OC	ZA	Albania	EU
VK9L	Lord Howe I.	OC	ZB2	Gibraltar	EU
VK9M	Melish Reef	OC	ZC4	UK Sov. Base Areas on Cyprus	AS
VK9N	Norfolk I.	OC	ZD7	St. Helena	AF
VK9W	Willis I.	OC	ZD8	Ascension I.	AF
VK9X	Christmas I.	OC	ZD9	Tristan da Cunha & Gough I.	AF
VP2E	Anguilla	NA	ZE	Zimbabwe	AF
VP2M	Montserrat	NA	ZF	Cayman Is.	NA
VP2V	British Virgin Is.	NA	ZK1	N. Cook Is.	OC
VP5	Turks & Caicos Is.	NA	ZK1	S. Cook Is.	OC
VP6	Pitcairn I.	OC	ZK2	Niue	OC
VP6	Dude I.	OC	ZK3	Tokelau Is.	OC
VP8	Falkland Is.	SA	ZL-ZM	New Zealand	OC
VP8, LU	South Georgia I.	SA	ZL7	Chatham Is.	OC
VP8, LU	South Orkney Is.	SA	ZL8	Kermadec Is.	OC
VP8, LU	South Sandwich Is.	SA	ZL9	Auckland & Campbell Is.	OC
VP8, LU,CE9, HF0, 4K1	South Shetland Is.	SA	ZP	Paraguay	SA
VP9	Bermuda	NA	ZR-ZU	South Africa	AF
VQ9	Chagos Is.	AF	ZS8	Prince Edward & Marion Is	AF
VS6, VR2	Hong Kong	AS	ZS, ZU	South Africa	AF
VT, VU, WV, VW	India	AS	ZV - ZZ	Brazil	SA
VU	Andaman & Nicobar Is.	AS			
VU	Laccadive Is.	AS			
VX, VY	Canada	NA			
VZ	Australia	OC			
W, WA - WZ	United States of America	NA			
XA-XH	Mexico	NA			
XJ, XO	Canada	NA			
XA4-XI4	Revilla Ggedo	NA			
XP	Denmark	EU			
XQ, XR	Chile	SA			
XR0Y, XR0R	Easter I.	SA			
XS	China	AS			
XT	Burkina Faso	AF			
XU	Cambodia	AS			
XV	Vietnam	AS			
XW	Laos	AS			
XX9	Macao	AS			
XY-XZ	Myanmar	AS			
YA	Afghanistan	AS			
YB-YH	Indonesia	OC			

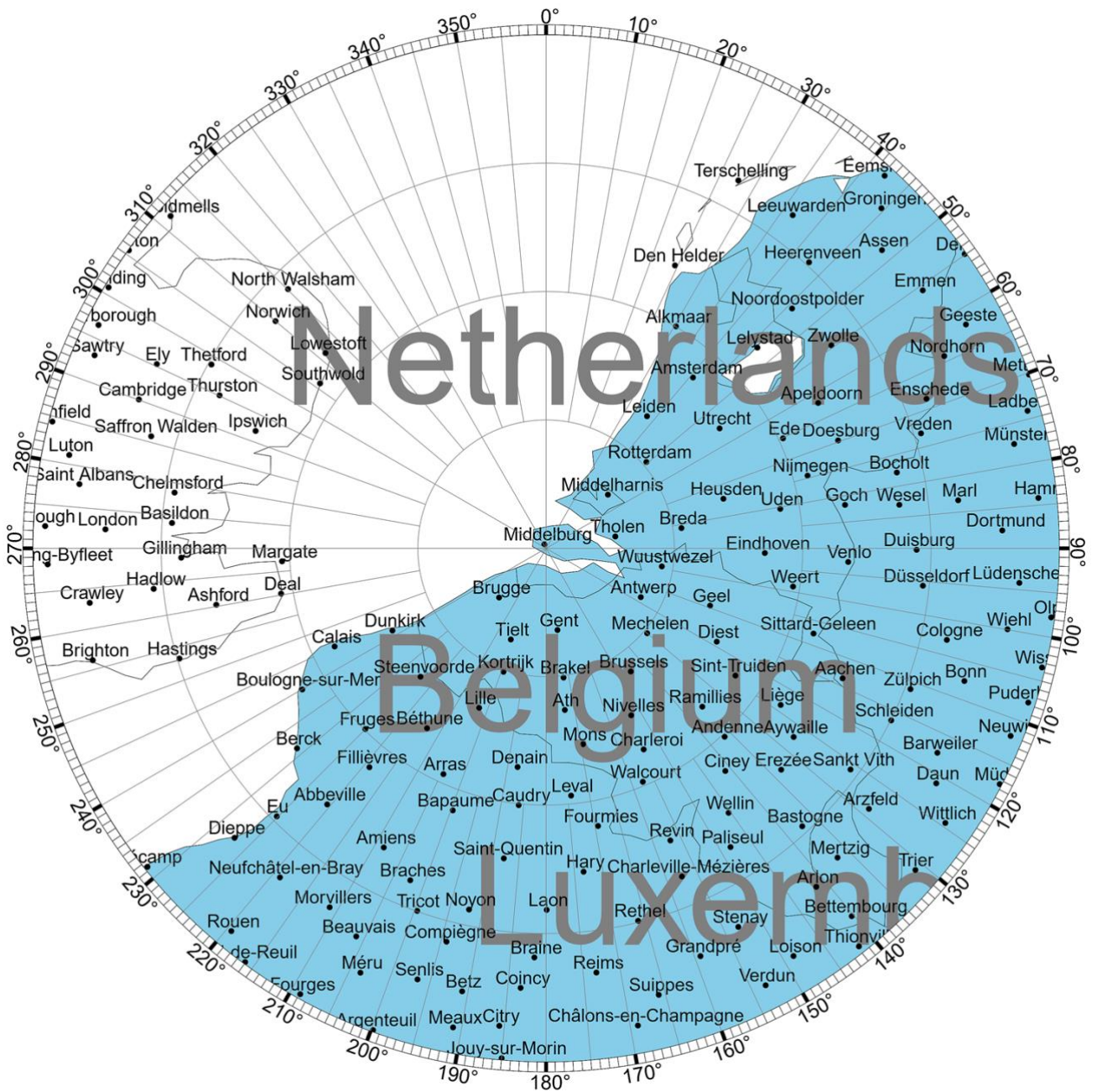


Onderverdeling per vak:

ax	bx		wx	xx
aw	bw		ww	xw
ab	bb		wb	xb
aa	ba		wa	xa







Amateur Beacon network:



Frequencies:

14.100 18.110 21.150 24.930 28.200

Each beacon transmits once on each band once every three minutes, 24 hours a day. A transmission consists of the callsign of the beacon sent at 22 words per minute followed by four one-second dashes.

The callsign and the first dash are sent at 100 watts. The remaining dashes are sent at 10 watts, 1 watt and 100 milliwatts.

At the end of each 10 second transmission, the beacon steps to the next higher band and the next beacon in the sequence begins transmitting.

	Call	Land
1	4U1UN	New York
2	VE8AT	Canada
3	W6WX	USA
4	KH6RS	Hawaii
5	ZL6B	Nieuw Zeeland
6	VK6RBP	Australië
7	JA2IGY	Japan
8	RR9O	Rusland
9	VR2B	Hong Kong
10	4S7B	Colombo
11	ZS6DN	Zuid Afrika
12	5Z4B	Kenya
13	4X6TU	Israel
14	OH2B	Finland
15	CS3B	Madeira
16	LU4AA	Argentinië
17	OA4B	Peru
18	YV5B	Venezuela

Number stations:

- The Buzzer UVB-76 : 4.625
- The Squeaky Wheel : 5.473 – 3.828 (avond)
- The Pip : 5.448 – 3.756 (avond)
- The Stalingrad Clock : 6.911
- Luchtvaart air control : 4.651
- Weerbericht luchtvaart London : 5.450
- Weerbericht luchtvaart Ierland : 5.505
- Noodfrequentie Luchtvaart : 5.680
- FAV22, Franse morseles : 3.881 – 6.825

Zie ook: <https://priyom.org/>

- E : English language voice broadcasts
- G : German language voice broadcasts
- S : Slavic language voice broadcasts
- V : Voice broadcasts in all other languages
- M : Morse code
- F : Frequency-shift keying digital modes
- P : Phase-shift keying digital modes
- XP : Russian 7 digital modes
- HM : Hybrids of analog and digital modes

SINPO CODE

Bij ontvangstrapporten naar omroepstations wordt de **SINPO** code gebruikt i.p.v. de RST code

	Signal Strength	Interference	Noise	Propagation	Overall
	Veldsterkte (S meter)	Storing door andere zenders	Storing, zowel natuurlijk (static) als man made	Fading (harder en zwakker worden)	Totaal Beoordeling
1	Nauwelijks hoorbaar (S1 – S4)	Zeer sterk	Zeer sterk	Zeer sterk > 60 per min.	Onbruikbaar
2	Zwak (S5 – S6)	Sterk	Sterk	Sterk 20 – 60 per min.	Zwak
3	Matig (S7 – S9)	Matig	Matig	Matig 5 – 20 per min.	Matig
4	Goed (S9 +20 dB)	Gering	Gering	Gering 1 – 5 per min.	Goed
5	Uitstekend (S9 +40 dB)	Geen	Geen	Geen 0	Uitstekend

European, Private Shortwave Stations

JUNE 1st 2024

Only legal stations are included. Most stations use low power, but a few use several kW. All times are given in UTC (NOT in CET, CEST, DST etc.)

Abbreviations: D = Germany, DNK = Denmark, FIN = Finland, NL = the Netherlands, NOR = Norway. A.o. = and others,

F.pl.: future plan, Int'l = International, Irr. = irregular, 24/7 = twenty-four hours a day, seven days a week, Mo = Monday, Tu = Tuesday, We = Wednesday, Th = Thursday, Fr = Friday, Sa = Saturday, Su = Sunday

kHz	Country	Name	Transmitter site	Schedule (UTC)
3955	D	Radio Channel 292	Rohrbach Waal	Daily 0000-2000 & 2100-2400
3975	D	Shortwave Radio	Winsen, Aller	Daily 1700-2400
3985	D	Shortwaveservice	Kall-Krekel	Daily 1600-1900 (Radio Slovakia Int'l a.o.)
3990	FIN	Radio Piko	Asikkala	Irr.
3995	D	HCJB	Weenermoor	24/7
5895	NOR	Radio Northern Star	Bergen	Daily 0459-2205
5920	D	HCJB	Weenermoor	24/7
5930	DNK	World Music Radio	Bramming	24/7
5940	NL	Radio Piepzender	Zwolle	Irr. (weekends)
5955	NL	Radio Veronica	Westdorpe	24/7
5970	DNK	Radio208	Hvidovre	24/7
5980	FIN	Radio Piko	Asikkala	Sa & Su 1800-2000
	DNK	Radio OZ-Viola	Hillerød	We 2100-2200
6005	D	Shortwaveservice	Kall-Krekel	Daily 1000-1530 (Radio Slovakia Int'l)
6020	NL	Radio Casanova International	Winterswijk	Irr.
6055	DNK	Radio OZ-Viola	Hillerød	Sa-Su 1100-1300
6060	NL	Radio Casanova International	Winterswijk	Irr.
6070	D	Radio Channel 292	Rohrbach Waal	24/7
6085	D	Shortwaveservice	Kall-Krekel	Daily 0700-1700 (Radio MiAmigo Int'l)
6110	NL	Radio Delta International	Elburg	Irr.
6115	D	Radio SE-TA 2	Gera	
6130	NL	Radio Europe	Alphen a/d Rijn	24/7
6150	D	Europa 24	Datteln	Daily 0700-1500
6160	D	Shortwave Radio	Winsen, Aller	Daily 0700-2200
6170	NL	Radio Delta International	Elburg	Fr, Sa & Su 1800-2200
	FIN	Scandinavian Weekend Radio	Virrat	Fr June 7 th 2100-2400 & Sa June 8 th 0000-2100
6185	NL	Radio Piepzender	Zwolle	Irr. (weekends)
6195	FIN	RealMix Radio	Raasepori	From Sa till Su 2000 + irr.
	D	Radio SE-TA 2	Waldheim	Irr. (In DRM only)
7270	NL	RockPower Radio	Nijmegen	Daily 1000-1900, sometimes -2300 or later
7365	D	HCJB	Weenermoor	24/7 (Segenswelle in Russian)
7405	NL	Radio Piepzender	Zwolle	Irr. (weekends)
7425	NL	Radio Piepzender	Zwolle	Irr. (alternative to 7405 kHz)
9670	D	Radio Channel 292	Rohrbach Waal	24/7
9770	FIN	Radio Piko	Asikkala	Sa & Su 1200-1300
9800	NL	Radio Delta International	Elburg	Silent
11690	FIN	Scandinavian Weekend Radio	Virrat	Fr June 7 th 2100-2400 & Sa June 8 th 0000-1800
11720	FIN	Scandinavian Weekend Radio	Virrat	Sa June 8 th 1800-2100
12030	NL	Radio Delta International	Elburg	Irr. Su 0700-1000
13595	NL	Radio Piepzender	Zwolle	
15700	DNK	World Music Radio	Randers	24/7
15785	D	BitExpress	Erlangen	24/7 (Funklust) (in DRM only)
25800	DNK	World Music Radio	Mårslet, Aarhus	24/7

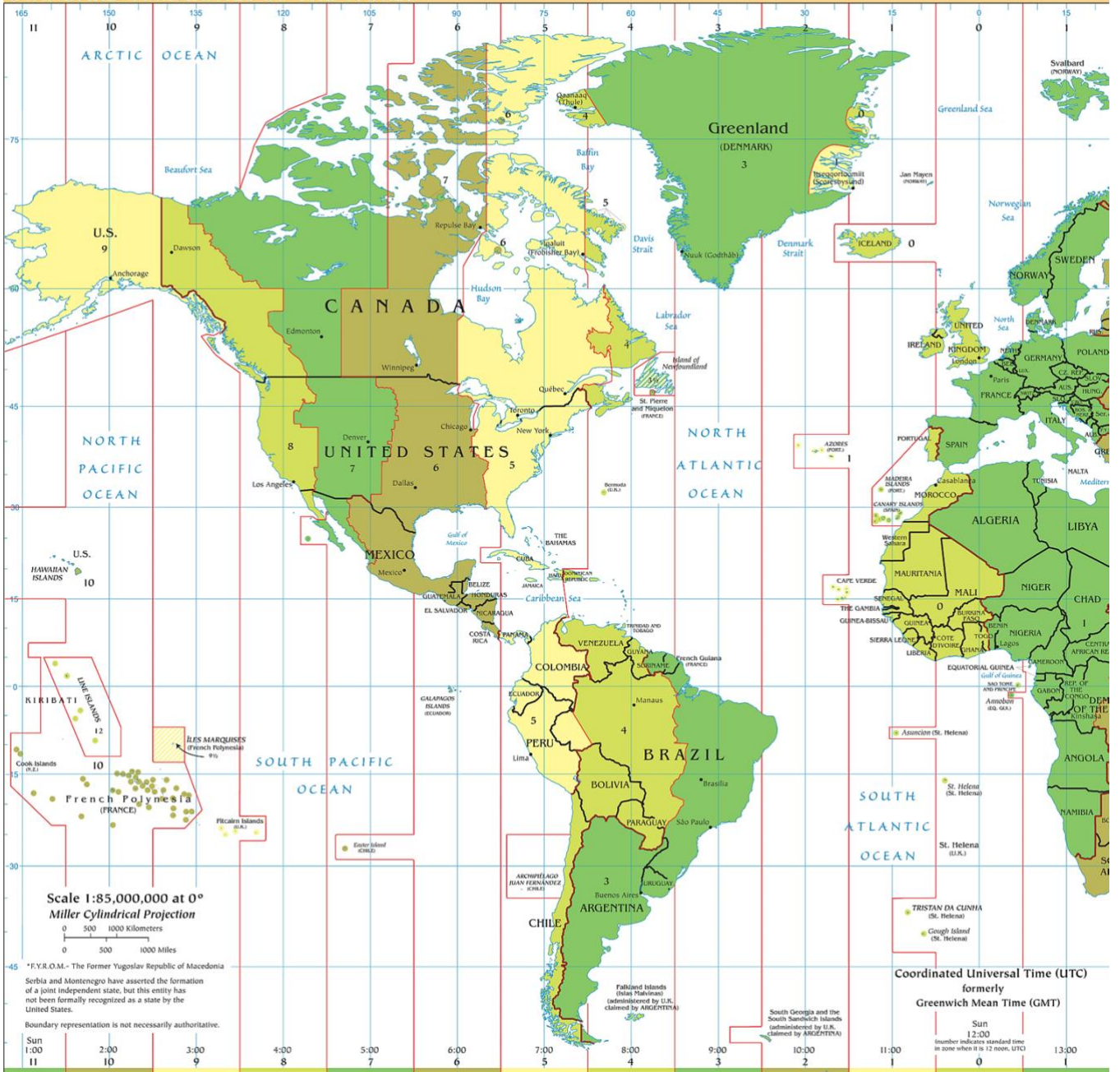
This list has been published by Hartvig Media ApS at the beginning of each month – based on details supplied by a few of the stations, stations websites, monitoring observations, HFCC registrations, and some presumptions. Not copyrighted. May be published everywhere – without alterations. This is the final edition.

World Time Zone Table

Name of Time Zone	UTC Time	City
Dateline Standard Time	UTC-12:00	International Date Line West
Samoa Standard Time	UTC-11:00	Midway Island, Samoa
Hawaiian Standard Time	UTC-10:00	Hawaii
Alaskan Standard Time	UTC-09:00	Alaska
Pacific Standard Time	UTC-08:00	Pacific Time (US and Canada); Tijuana
Mountain Standard Time	UTC-07:00	Mountain Time (US and Canada)
Mexico Standard Time 2	UTC-07:00	Chihuahua, La Paz, Mazatlan
U.S. Mountain Standard Time	UTC-07:00	Arizona
Central Standard Time	UTC-06:00	Central Time (US and Canada)
Canada Central Standard Time	UTC-06:00	Saskatchewan
Mexico Standard Time	UTC-06:00	Guadalajara, Mexico City, Monterrey
Central America Standard Time	UTC-06:00	Central America
Eastern Standard Time	UTC-05:00	Eastern Time (US and Canada)
U.S. Eastern Standard Time	UTC-05:00	Indiana (East)
S.A. Pacific Standard Time	UTC-05:00	Bogota, Lima, Quito
Atlantic Standard Time	UTC-04:00	Atlantic Time (Canada)
S.A. Western Standard Time	UTC-04:00	Caracas, La Paz
Pacific S.A. Standard Time	UTC-04:00	Santiago
E. South America Standard Time	UTC-03:00	Brasilia
S.A. Eastern Standard Time	UTC-03:00	Buenos Aires, Georgetown
Greenland Standard Time	UTC-03:00	Greenland
Mid-Atlantic Standard Time	UTC-02:00	Mid-Atlantic
Azores Standard Time	UTC-01:00	Azores
Cape Verde Standard Time	UTC-01:00	Cape Verde Islands
GMT Standard Time	UTC	Greenwich Mean Time: Dublin, Edinburgh, Lisbon, London
Greenwich Standard Time	UTC	Casablanca, Monrovia
Central Europe Standard Time	UTC+01:00	Belgrade, Bratislava, Budapest, Ljubljana, Prague
Central European Standard Time	UTC+01:00	Sarajevo, Skopje, Warsaw, Zagreb
Romance Standard Time	UTC+01:00	Brussels, Copenhagen, Madrid, Paris
W. Europe Standard Time	UTC+01:00	Amsterdam, Berlin, Bern, Rome, Stockholm, Vienna
W. Central Africa Standard Time	UTC+01:00	West Central Africa
E. Europe Standard Time	UTC+02:00	Bucharest
Egypt Standard Time	UTC+02:00	Cairo
FLE Standard Time	UTC+02:00	Helsinki, Kiev, Riga, Sofia, Tallinn, Vilnius
GTB Standard Time	UTC+02:00	Athens, Istanbul, Minsk
Israel Standard Time	UTC+02:00	Jerusalem
South Africa Standard Time	UTC+02:00	Harare, Pretoria
Russian Standard Time	UTC+03:00	Moscow, St. Petersburg, Volgograd
Arab Standard Time	UTC+03:00	Kuwait, Riyadh
E. Africa Standard Time	UTC+03:00	Nairobi
Arabic Standard Time	UTC+03:00	Baghdad
Arabian Standard Time	UTC+04:00	Abu Dhabi, Muscat
Caucasus Standard Time	UTC+04:00	Baku, Tbilisi, Yerevan
Ekaterinburg Standard Time	UTC+05:00	Ekaterinburg
West Asia Standard Time	UTC+05:00	Islamabad, Karachi, Tashkent
Central Asia Standard Time	UTC+06:00	Astana, Dhaka
Sri Lanka Standard Time	UTC+06:00	Sri Jayawardenepura
N. Central Asia Standard Time	UTC+06:00	Almaty, Novosibirsk
S.E. Asia Standard Time	UTC+07:00	Bangkok, Hanoi, Jakarta
North Asia Standard Time	UTC+07:00	Krasnoyarsk
China Standard Time	UTC+08:00	Beijing, Chongqing, Hong Kong SAR, Urumqi
Singapore Standard Time	UTC+08:00	Kuala Lumpur, Singapore
Taipei Standard Time	UTC+08:00	Taipei
W. Australia Standard Time	UTC+08:00	Perth
North Asia East Standard Time	UTC+08:00	Irkutsk, Ulaanbaatar
Korea Standard Time	UTC+09:00	Seoul
Tokyo Standard Time	UTC+09:00	Osaka, Sapporo, Tokyo
Yakutsk Standard Time	UTC+09:00	Yakutsk
A.U.S. Eastern Standard Time	UTC+10:00	Canberra, Melbourne, Sydney
E. Australia Standard Time	UTC+10:00	Brisbane
Tasmania Standard Time	UTC+10:00	Hobart
Vladivostok Standard Time	UTC+10:00	Vladivostok
West Pacific Standard Time	UTC+10:00	Guam, Port Moresby
Central Pacific Standard Time	UTC+11:00	Magadan, Solomon Islands, New Caledonia
Fiji Islands Standard Time	UTC+12:00	Fiji Islands, Kamchatka, Marshall Islands
New Zealand Standard Time	UTC+12:00	Auckland, Wellington

Source: Microsoft Time Zone

STANDARD TIME ZONES OF THE WORLD



Add time zone number to local time to obtain UTC.
 Subtract time zone number from UTC to obtain local time.



802700A (R02183) 4-00

WRTH Bargraph Frequency Guide

Geographical Area Codes

Codes assigned by the International Telecommunications Union ITU (except * = WRTH code)

Code	Country	Code	Country	Code	Country
ABW	Aruba	CKH	Cook Islands	GUM	Guam
AFG	Afghanistan	CLM	Colombia	GUY	Guyana
AFS	South Africa	CLN	Sri Lanka	HKG	Hong Kong
AGL	Angola	CME	Cameroon	HND	Honduras
AIA	Anguilla	CNR	Canary Islands	HNG	Hungary
ALB	Albania	COD	Congo (Dem. Rep. of the)	HOL	Netherlands
ALG	Algeria	COG	Congo (Rep. of the)	HRV	Croatia
ALS	Alaska	COM	Comoros	HTI	Haiti
AMS	St Paul & Amsterdam Is	CPV	Cabo Verde	HWA	Hawaii
AND	Andorra	CRO	Crozet Islands	I	Italy
AOE	Western Sahara	CTI	Côte d'Ivoire	ICO	Cocos (Keeling) Islands
ARG	Argentina	CTR	Costa Rica	IND	India
ARM	Armenia	CUB	Cuba	INS	Indonesia
ARS	Saudi Arabia	CUW	Curaçao	IRL	Ireland
ASC	Ascension Island	CVA	Vatican City State	IRN	Iran
ATA	Antarctica	CYM	Cayman Islands	IRQ	Iraq
ATG	Antigua & Barbuda	CYP	Cyprus	ISL	Iceland
AUS	Australia	CZE	Czechia	ISR	Israel
AUT	Austria	D	Germany	J	Japan
AZE	Azerbaijan	DGA	Diego Garcia	JMC	Jamaica
AZR	Azores	DJI	Djibouti	JOR	Jordan
B	Brazil	DMA	Dominica	KAZ	Kazakhstan
BAH	Bahamas	DNK	Denmark	KEN	Kenya
BDI	Burundi	DOM	Dominican Republic	KER	Kerguelen Islands
BEL	Belgium	E	Spain	KGZ	Kyrgyzstan
BEN	Benin	EGY	Egypt	KIR	Kiribati
BER	Bermuda	EQA	Ecuador	KOR	Korea, South
BES	Bonaire / Saba / St Eustatius	ERI	Eritrea	KRE	Korea, North
BFA	Burkina Faso	EST	Estonia	KWT	Kuwait
BGD	Bangladesh	ETH	Ethiopia	LAO	Laos
BHR	Bahrain	F	France	LBN	Lebanon
BIH	Bosnia & Herzegovina	FIN	Finland	LBR	Liberia
BIO	British Indian Ocean Territory	FJI	Fiji	LBY	Libya
BLM	St Barthélemy	FLK	Falkland Islands	LCA	St Lucia
BLR	Belarus	FRO	Faroe Islands	LHW*	Lord Howe Island
BLZ	Belize	FSM	Micronesia	LIE	Liechtenstein
BOL	Bolivia	G	United Kingdom	LSO	Lesotho
BOT	Botswana	GAB	Gabon	LTU	Lithuania
BRB	Barbados	GAL*	Galapagos Islands	LUX	Luxembourg
BRM	Myanmar	GEO	Georgia	LVA	Latvia
BRU	Brunei	GHA	Ghana	MAC	Macao
BTN	Bhutan	GIB	Gibraltar	MAF	St Martin
BUL	Bulgaria	GLP	Guadeloupe	MAU	Mauritius
CAF	Central African Republic	GMB	Gambia	MCO	Monaco
CAN	Canada	GNB	Guinea-Bissau	MDA	Moldova
CBG	Cambodia	GNE	Equatorial Guinea	MDG	Madagascar
CEU*	Ceuta	GRC	Greece	MDR	Madeira
CHL	Chile	GRD	Grenada	MEL*	Melilla
CHN	China (People's Rep. of)	GRL	Greenland	MEX	Mexico
CHR	Christmas Island	GTM	Guatemala	MHL	Marshall Islands
		GUF	French Guiana	MKD	North Macedonia
		GUI	Guinea	MLA	Malaysia

Code	Country
MLD	Maldives
MLI	Mali
MLT	Malta
MNE	Montenegro
MNG	Mongolia
MOZ	Mozambique
MRA	Northern Mariana Is
MRC	Morocco
MRT	Martinique
MSR	Montserrat
MTN	Mauritania
MWI	Malawi
MYT	Mayotte
NCG	Nicaragua
NCL	New Caledonia
NFK	Norfolk Island
NGR	Niger
NIG	Nigeria
NIU	Niue
NMB	Namibia
NOR	Norway
NPL	Nepal
NRU	Nauru
NZL	New Zealand
OCE	French Polynesia
OMA	Oman
PAK	Pakistan
PAQ	Easter Island
PHL	Philippines
PLW	Palau
PNG	Papua New Guinea
PNR	Panama
POL	Poland
POR	Portugal
PRG	Paraguay
PRU	Peru

Code	Country
PSE*	Palestine ¹
PTC	Pitcairn Islands
PTR	Puerto Rico
QAT	Qatar
REU	Réunion
RKS*	Kosovo
ROD	Rodrigues
ROU	Romania
RRW	Rwanda
RUS	Russia
S	Sweden
SCN	St Kitts & Nevis
SDN	Sudan
SEN	Senegal
SEY	Seychelles
SHN	St Helena
SLM	Solomon Islands
SLV	El Salvador
SMA	American Samoa
SMO	Samoa
SMR	San Marino
SNG	Singapore
SOM	Somalia
SPM	St Pierre & Miquelon
SRB	Serbia
SRL	Sierra Leone
SSD	South Sudan
STP	São Tomé & Príncipe
SUI	Switzerland
SUR	Suriname
SVK	Slovakia
SVN	Slovenia
SWZ	Eswatini
SXM	St Maarten
SYR	Syria
TCA	Turks & Caicos Islands

Code	Country
TCD	Chad
TGO	Togo
THA	Thailand
TJK	Tajikistan
TKM	Turkmenistan
TKL	Tokelau
TLS	Timor-Leste
TON	Tonga
TRC	Tristan da Cunha
TRD	Trinidad & Tobago
TUN	Tunisia
TUR	Turkey
TUV	Tuvalu
TWN*	Taiwan (Rep. of China)
TZA	Tanzania
UAE	United Arab Emirates
UGA	Uganda
UKR	Ukraine
URG	Uruguay
USA	United States of America
UZB	Uzbekistan
VCT	St Vincent & the Grenadines
VEN	Venezuela
VIR	Virgin Islands
VRG	British Virgin Islands
VTN	Vietnam
VUT	Vanuatu
WAL	Wallis & Futuna
WAK	Wake Island
XGZ	Gaza Strip ¹
XWB	West Bank ¹
YEM	Yemen
ZMB	Zambia
ZWE	Zimbabwe

Target Area Codes

Code	Target Area
Af	Africa
Am	Americas
As	Asia
Atl	Atlantic Ocean
BaS	Baltic Sea
CAf	Central Africa
CAM	Central America
Car	Caribbean

Code	Target Area
CAs	Central Asia
Cau	Caucasia
CEu	Central Europe
EAF	Eastern Africa
EAs	Eastern Asia
EEu	Eastern Europe
Eu	Europe
IOc	Indian Ocean
LAM	Latin America

Code	Target Area
ME	Middle East
Med	Mediterranean
NAf	Northern Africa
NAM	North America
NAs	Northern Asia
NEu	Northern Europe
NoS	North Sea
Pac	Pacific
SAf	Southern Africa

Code	Target Area
SAM	South America
SAs	Southern Asia
SEA	South East Asia
SEu	Southern Europe
WAF	Western Africa
WAs	West Asia

WRTH TRANSMITTER SITES

Location and Decode Tables

INTERNATIONAL TRANSMITTER SITES

The transmitter sites shown below were used for International broadcasting during the 'A' / Summer season.

Transmitter sites that do not appear in the broadcaster schedules for this this season have been removed from this list.

Where a '✓' is shown in the '**MW**' column, this indicates the site has Mediumwave (0.5-1.7MHz) &/or Longwave (0.15-0.3MHz) transmitters installed.

If there is a '✓' in the '**SW**' column, the site has Shortwave (2.3-26MHz) capability.

If either column has an '✗', that site does not have transmitters installed that cover the range indicated.

Code Site	Ctry	Lat	Long	SW	MW	Code Site	Ctry	Lat	Long	SW	MW
abs Abis	EGY	31N08	030E04	✓	✗	fuz Fuzhou, Quanzhou (Fujian prov.)	CHN	24N53	118E48	✓	✗
ahw Ahvaz, Bandar-e Mahshar	IRN	30N37	049E12	✓	✓	gal Bacau, Galbeni	ROU	46N45	026E51	✓	✗
aja Abuja, Lugbe	NIG	08N58	007E22	✓	✗	goy Seoul, Goyang	KOR	37N36	126E51	✓	✓
alf Omdurman, Al Fitahab	SDN	15N35	032E27	✓	✗	grg Gorgan (tentative location)	IRN	36N51	056E26	✗	✓
arm Krasnodar, Tbilisskaya	RUS	45N28	040E06	✓	✗	grv Greenville, NC	USA	35N28	077W12	✓	✗
asc English Bay	ASC	07S54	014W23	✓	✗	hab La Habana, Bauta	CUB	22N57	082W33	✓	✗
avl Vathy (Avlida municipality)	GRC	38N23	023E36	✓	✗	ham Hamhung	KRE	39N55	127E31	✓	✗
bcq Monticello, ME	USA	46N20	067W49	✓	✗	hbn Medorm, Babeldaob Island	PLW	07N27	134E29	✓	✗
bei Beijing, Doudian	CHN	39N38	116E06	✓	✗	hdn Huadian (Jilin prov.)	CHN	43N07	126E31	✗	✓
bej La Habana, Bejucal	CUB	22N52	082W20	✓	✗	hdu Guangzhou, Liantang (Guangdong prov.)	CHN	23N24	113E14	✗	✓
bgl Bengaluru, Doddaballapur	IND	13N15	077E29	✓	✗	hee Heerde	HOL	52N40	006E03	✓	✗
bib Biblis	D	49N41	008E29	✓	✗	hei Shuangyashan (Heilongjiang prov.)	CHN	46N43	131E13	✗	✓
bis Bishkek, Krasnaya Rechka	KGZ	42N53	074E59	✓	✓	hil Hillerød	DNK	55N53	012E16	✓	✗
bjj Baoji, Qishan (Shaanxi prov.)	CHN	34N42	106E56	✓	✗	hjh Barranquilla (HJHJ Radio Libertad)	CLM	11N00	074W48	✗	✓
bko Bamako, Kati	MLI	12N45	008W03	✓	✗	hnl Changzhou, Henglin (Jiangsu prov.)	CHN	31N42	120E07	✗	✓
bnb Bonab	IRN	37N18	046E03	✗	✓	hri Furman, SC	USA	32N41	081W08	✓	✗
bnt Bandar-e Torkaman	IRN	36N54	054E03	✗	✓	hst Hartenstein	D	50N40	012E41	✓	✗
boc Bocaue (Bulacan prov.)	PHL	14N48	120E55	✓	✗	huh Hohhot, Bikeqi (Nei Menggu auton. reg.)	CHN	40N48	111E12	✓	✗
bor Borculo	HOL	52N07	006E31	✓	✗	hvi Hvidovre (F.pl)	DNK	55N39	012E28	✓	✓
bot Selebi-Phikwe, Moepeng Hill	BOT	21S57	027E38	✓	✓	hwa Hwaseong	KOR	37N13	126E47	✓	✗
bph Bangkok, Rasom	THA	14N24	100E47	✗	✓	iba Iba (Zambales prov.)	PHL	15N22	119E57	✓	✗
brg Bramming	DNK	55N29	008E39	✓	✗	inb Red Lion, PA	USA	39N54	076W35	✓	✗
btr Batrah	EGY	31N10	031E26	✗	✓	ish Ishøj	DNK	55N37	012E21	✗	✓
cah Changchun (Jilin prov.)	CHN	43N44	125E24	✗	✓	iss Issoudun	F	46N56	001E53	✓	✗
chj Chongjin	KRE	41N46	129E42	✓	✓	jak Jakarta (tentative location)	INS	06S24	106E52	✓	✗
chr Chabahar	IRN	25N29	060E32	✗	✓	jan Hwaseong, Jangan	KOR	37N18	126E58	✓	✗
dan Dangjin (HLCA)	KOR	36N58	126E37	✗	✓	jed Jeddah, Al Khumra	ARS	21N15	039E10	✓	✗
dat Datteln	D	51N39	007E20	✓	✗	jej Jeju (HLAZ)	KOR	33N29	126E23	✗	✓
deh Mangshi (Dehong auton. pref., Yunnan prov.)	CHN	24N27	098E36	✗	✓	jhr Milton, FL	USA	30N39	087W05	✓	✓
del Delhi	IND	28N43	077E12	✓	✗	jln Jinhua, Lanxi (Zhejiang prov.)	CHN	29N07	119E19	✓	✗
dha Dhabbaya	UAE	24N10	054E15	✓	✓	jnm Hwaseong, Jeongnam	KOR	37N09	127E00	✓	✗
dji Djibouti, Dorale	DJI	11N34	043E04	✗	✓	jol Jolfa	IRN	38N56	045E36	✗	✓
dka Dhaka, Shavar	BGD	24N00	090E15	✓	✗	kab Kabul	AFG	34N32	069E20	✓	✓
dof Dongfang (Hainan prov.)	CHN	18N53	108E39	✗	✓	kan Kangnam	KRE	38N50	125E40	✗	✓
dol Dole	TZA	06S06	039E15	✓	✗	kas Kashgar (Kashi), Sayibage (Xinjiang Uighur prov.)	CHN	39N21	075E46	✓	✓
dro Droitwich	G	52N18	002W06	✗	✓	kbd Kuwait, Kabd	KWT	29N09	047E46	✓	✗
dsb Dushanbe	TJK	38N29	068E48	✓	✓	kch Grigoriopol, Maiac	MDA	47N17	029E25	✓	✓
ela El Arish	EGY	31N07	033E42	✗	✓	kho Khost, Tani	AFG	33N20	069N56	✗	✓
elb Elburg	HOL	52N26	005E52	✓	✗						
emr Emirler	TUR	39N24	032E51	✓	✗						
erd Bergen, Erdal	NOR	60N27	005E13	✓	✓						
erv Gavar, Noratus	ARM	40N25	045E11	✓	✓						
ewn Vandiver, AL	USA	33N30	086W29	✓	✗						

Code Site	Ctry	Lat	Long	SW	MW	Code Site	Ctry	Lat	Long	SW	MW
kia	Bandar e-Kiashahr	IRN	37N25	050E01	✓ ✓	rob	Rohrbach, Eja	D	48N36	011E33	✓ ✗
kih	Kish Island	IRN	26N34	053E56	✓ ✓	rou	Roumoules	F	43N48	006E10	✗ ✓
kim	Gimje	KOR	35N49	126E52	✓ ✓	sai	Saipan, Agingan Point	MRA	15N07	145E42	✓ ✗
kkt	Chinsurah	IND	23N02	088E21	✓ ✓	sao	Pinheira	STP	00N18	006E45	✓ ✓
kl	Kall, Krekel	D	50N29	006E31	✓ ✗	sda	Agat, Facpi Point	GUM	13N20	144E39	✓ ✗
kmk	Kimchaek	KRE	40N41	129E12	✓ ✓	seo	Seoul, Daebu Isl (HLKX)	KOR	37N13	126E33	✗ ✓
kng	Kanggye	KRE	41N01	126E39	✓ ✗	sha	Kunming, Shalang (Yunnan prov.)	CHN	25N41	102E41	✓ ✗
knx	Kununurra	AUS	15S49	128E40	✓ ✗	sir	Sirjan	IRN	29N36	055E47	✓ ✗
kou	Kouhu	TWN	23N32	120E10	✓ ✓	sko	Skopje, Sveti Nikole	MKD	41N47	021E53	✗ ✓
kuj	Kujang	KRE	40N05	126E07	✓ ✗	sla	A'Seela	OMA	21N55	059E37	✓ ✓
kun	Kunming, Anning (Yunnan prov.)	CHN	24N53	102E30	✓ ✓	smg	Santa Maria di Galeria	CVA	42N03	012E19	✓ ✗
kwt	Kuwait, Umm Al-Rimam	KWT	29N31	047E40	✓ ✓	sng	Singapore	SNG	01N25	103E43	✓ ✗
lam	Lampertheim	D	49N36	008E32	✓ ✗	snu	Sinuiju	KRE	40N05	124E27	✗ ✓
lha	Lhasa (Chengguan), (Xizang auton. reg.)	CHN	29N39	091E15	✓ ✗	sof	Sofia, Kostinbrod	BUL	42N49	023E11	✓ ✗
ira	Base Antártica Esperanza	ATA	63S24	057W00	✓ ✗	sol	Solec Kujawski (Polskie R1)	POL	53N01	018E30	✗ ✓
luv	Lusaka, Makeni Ranch	ZMB	15S32	028E00	✓ ✗	sw	Sangwon	KRE	38N53	126E06	✗ ✓
maa	Marslet	DNK	56N06	010E12	✓ ✗	szg	Shijiazhuang, Nanpozhuang (Hebei prov.)	CHN	38N13	114E06	✓ ✗
man	Manzini, Mpangela Ranch	SWZ	26S20	031E36	✓ ✓	tac	Toshkent	UZB	41N13	069E09	✓ ✗
mdc	Talata Volonondry	MDG	18S45	047E37	✓ ✗	tig	Bucuresti	ROU	44N45	026E06	✓ ✗
mia	Miaoali	TWN	24N23	120E42	✓ ✗	tin	Tinian	MRA	15N03	145E36	✓ ✗
min	Minhsiung	TWN	23N34	120E26	✓ ✓	trm	Trincomalee, Perkara	CLN	08N45	081E08	✓ ✓
mos	Moosbrunn	AUT	48N00	016E28	✓ ✗	tsh	Tanshui	TWN	25N11	121E25	✓ ✗
msk	Moskva	RUS	55N45	037E37	✗ ✓	tts	Tartus	SYR	34N57	035E53	✗ ✓
msn	Jeongok, Misan	KOR	38N01	126E59	✗ ✓	twb	Bonaire, Belnem	BES	12N06	068W17	✗ ✓
mth	Marathon Key, FL	USA	24N42	081W05	✗ ✓	twr	Merizo	GUM	13N17	144E40	✓ ✗
mwv	Mahajanga II (Belobaka), Amparemahitsy	MDG	15S43	046E26	✓ ✗	tww	Lebanon, TN	USA	36N17	086W06	✓ ✗
nau	Nauen	D	52N39	012E55	✓ ✗	tyb	Tayebad	IRN	34N44	060E48	✗ ✓
nls	Anchor Point, AK	ALS	59N45	151W44	✓ ✗	uba	Ulaanbaatar, Khonkhor	MNG	47N48	107E11	✓ ✗
nnn	Nanning (Guangxi Zhuang auton. reg.)	CHN	22N48	108E11	✓ ✗	udo	Udon Thani, Ban Dung	THA	17N40	103E12	✓ ✗
nob	Noblejas	E	39N57	003W26	✓ ✗	uru	Ürümqi (Wulumuqi), (Xinjiang Uighur auton. reg.)	CHN	44N09	086E54	✓ ✓
nwn	Seoul, Taereung	KOR	37N38	127E07	✓ ✗	ust	Taiwan (exact site unknown)	TWN	—	—	✓ ✓
omo	Can Tho, Thoi Hung	VTN	10N07	105E34	✗ ✓	vie	Vientiane	LAO	18N00	102E38	✓ ✗
pad	Padua, Villa Estense (AM Italia)	I	45N09	011E42	✗ ✓	vir	Virrat, Liedenspohja	FIN	62N23	023E37	✓ ✓
pao	Paochung	TWN	23N43	120E18	✓ ✗	vni	Son Tay	VTN	21N12	105E22	✓ ✗
par	Parakou	BEN	09N21	002E37	✗ ✓	voh	Rancho Simi, CA	USA	34N15	118W39	✓ ✗
pga	Palangkaraya	INS	02S13	113E55	✓ ✗	vst	Anykšciai, Viešintos	LTU	55N42	024E59	✗ ✓
pht	Tinang	PHL	15N22	120E37	✓ ✗	wcr	Nashville, TN	USA	36N12	086W54	✓ ✗
pin	Pinneberg	D	53N40	009E48	✓ ✗	wis	Winsen an der Aller	D	52N40	009E52	✓ ✗
ptg	Pingtung	TWN	22N23	120E37	✓ ✗	wnm	Weenermoor	D	53N12	007E19	✓ ✗
put	Puttalam	CLN	07N58	079E48	✓ ✓	wof	Woofferton	G	52N19	002W43	✓ ✗
pyo	Pyongyang	KRE	39N03	125E42	✓ ✗	wrb	Morrison, TN	USA	35N37	086W01	✓ ✗
qiq	Qiqihar (Heilongjiang prov.)	CHN	47N02	124E00	✓ ✗	xia	Xi'an, Xianyang (Shaanxi prov.)	CHN	34N22	108E37	✓ ✗
qsh	Qasr-e Shirin	IRN	34N27	045E37	✗ ✓	xuw	Xuanwei (Yunnan prov.)	CHN	26N08	104E01	✓ ✓
qui	Quito, Mount Pichincha	EQU	00S10	078W32	✓ ✗	yam	Tokyo, Yamata	J	36N10	139E49	✓ ✗
qvc	La Habana, Quivicán	CUB	22N49	082W18	✓ ✗	yan	Yangon (Mayangon) (Myanma R.)	BRM	16N52	096E10	✓ ✗
raj	Rajkot	IND	22N30	070E31	✗ ✓	zab	Zabol	IRN	31N02	061E33	✗ ✓
ran	Rangitaiki	NZL	38S51	176E26	✓ ✗	zah	Zahedan	IRN	29N28	060E52	✓ ✗
rbn	Rabouni	ALG	27N33	008W06	✗ ✓	zak	Zakaki, Lady's Mile (Akrotiri Sovereign Base Area)	CYP	34N37	033E00	✗ ✓
riy	Riyadh	ARS	24N49	046E52	✓ ✗	zwo	Zwolle	HOL	52N29	006E06	✓ ✗
rmi	Okeechobee, FL	USA	27N27	080W56	✓ ✗						
rnd	Randers	DNK	56N27	010E02	✓ ✗						
rno	New Orleans, LA	USA	29N50	090W07	✓ ✗						

WRTH TARGET AREA CODES

Code	Target	Code	Target	Code	Target	Code	Target
Af	Africa	CAs	Central Asia	LAm	Latin America	Pac	Pacific Ocean
Am	Americas	Cau	Caucasia	ME	Middle East	SAf	Southern Africa
As	Asia	CEu	Central Europe	Med	Mediterranean	SAM	South America
Atl	Atlantic Ocean	EAF	Eastern Africa	NAf	Northern Africa	SAS	Southern Asia
BaS	Baltic Sea	EAS	Eastern Asia	NAm	North America	SEA	South East Asia
CAf	Central Africa	EEu	Eastern Europe	NAs	Northern Asia	SEu	Southern Europe
CAM	Central America	Eu	Europe	NEu	Northern Europe	WAF	Western Africa
Car	Caribbean	IOc	Indian Ocean	NoS	North Sea	WAS	West Asia

WRTH Bargraph Frequency Guide

Abbreviations

±	= variable	ICDI	= Integrated Community Development International
†	= irregular	I.F.	= Independence Front
+	= DRM	Inst	= Institute
‡	= inactive	Int.	= International/Internacional
		IRRS	= Italian Radio Relay Service
AIR	= All India Radio	JKashFr	= Jammu & Kashmir Freedom (Movement)
AWR	= Adventist World Radio	KBS	= Korean Broadcasting System
Bet.	= Betar	KCBS	= Korean Central Broadcasting Station
Beibu Bay	= VO Guangxi Beibu Wan	KGR	= Kyrgyz radiosu
Bey.	= Beyond	kHz	= kiloHertz
Broadc.	= Broadcast(ing)	Kurd.	= Kurdistan
BBC	= British Broadcasting Corporation	Liber.	= Liberation
BBG	= Broadcasting Board of Governors	LR	= Lokalradio
BC	= Broadcasting Corporation/Centre	LV	= La Voce/La Voz
Bc	= Broadcasting	MC	= Monte Carlo
BS	= Broadcasting Station/Service	Medi 1	= Radio Méditerranée Internationale
BSKSA	= Broadcasting Service of the Kingdom of Saudi Arabia	Met.	= Meteorologia
		Min.	= Ministry
BVB	= Bible Voice Broadcasting	Miss.	= Missionswerk
C.	= Coatán	MND	= Ministry of National Defense
CBC	= Canadian Broadcasting Corporation	Montevid.	= Montevideo
C.G.	= Campo Grande	N.	= North(ern)
Ch.	= Channel	N. Terr.	= Northern Territories
Co.	= Company	Nal.	= Nacional/Nasional/Nasionaly
Corp.	= Corporation	Nat.	= National
CRI	= China Radio International	NBC	= National Broadcsting Corporation
CRTV	= Cameroon Radio Television	NCN	= National Communications Network
CTB	= China Tibet Broadcasting	Ndara.	= Ndarason
Cult.	= Cultural	NHK	= Nippon Hoso Kyokai
CVC	= Christian Vision	NIST	= National Institute of Standards and Technology
Dem	= Democratic/Democracy		
Dif.	= Difusora, Difusão	N Kor	= North Korea
Diff.	= Diffusion	Nthrn Star	= Northern Star
DLSN	= Đáp Lòi Sông Núi	ONRT	= Office National de Radio et TV
D.R.	= Dimts Radio	ORT	= Office de Radiodiffusion et TV
DRM	= Digital Radio Mondiale	OVR	= Oromo Voice Radio
DWD	= Deutscher Wetterdienst	P&D	= Peace and Democracy
EBC	= Ethiopian Broadcasting Corporation	Palang.	= Palangkaraya
EMR	= European Music Radio	PanAm	= Pan American
ERT	= Elliniki Radiofonia Teleorassi	PBS	= People's Broadcasting Station/Public Broadcasting Service
ETC R.	= End Times Coming Radio		
Ev.	= Evangelische	PMR	= Radio Pridnestrovskoy Moldavskoy Respubliki
FEBA	= Far Eastern Broadcasting Associates	P.R.	= Public Radio
FEBC	= Far Eastern Broadcasting Company	Pto	= Puerto
Filazant.	= Filazantsara	Queb.	= Quebec
FRCN	= Federal Radio Corporation of Nigeria	R.	= Radio, Rádio, Rádío, Radyjo, Radyo
		Rad.	= Radio, Radiosu, Radiofonico
FTB	= Follow the Bible	RAE	= Radiodifusión Argentina al Exterior
G.	= Guaviare	RAI	= Radiotelevisione Italiana
Gem	= Gemeinden	RASD	= Radio Nacional de la República Arabe Saharaui Democrática
GTRK	= Gosudarstvennaya Televizionnaya i Radioveshchatelnaya	RchBeyond	= Reach Beyond (Australia)
		RCI	= Radio Canada international
IBC	= Italian Broadcasting Corporation	Rdif.	= Radiodiffusion/Radiodifusión
IBRA	= International Broadcasting Association		

R. Dif.	=	Radio Difusora/Difusão	SLBC	=	Sri Lanka Broadcasting Corporation
REE	=	Radio Exterior de España	SODRE	=	Servicio Oficial de Difusión, Radiotelevisión y Espectáculos
Reg.	=	Regional	Sol.	=	Solano
Rep.	=	Republic/Republique	S.P.	=	São Paulo
RFA	=	Radio Free Asia	SRG-SSR	=	Schweizerische Radio- und Fernsehgesellschaft - Société suisse de radiodiffusion et télévision
RFE	=	Radio Free Europe	SRTC	=	Sudan Radio & TV Corporation
RFI	=	Radio France Internaionale	Sto	=	Santo
RHC	=	Radio Habana Cuba	Sult	=	Sultan
RL	=	Radio Liberty	SW	=	Shortwave
RN	=	Radio Nacional	SWR	=	Scandinavian Weekend Radio
RNZI	=	Radio New Zealand International	Talata V.	=	Talata Volonondry
RRI	=	Radio Rumania International/Radio Republik Indonesia	TDF	=	Télé Diffusion de France
RTB	=	Radiodiffusion Télévision du Burkina	TV	=	Television/Télévision
RTBF	=	Radio-Télévision Belge de la Communaute Francaise	TWR	=	Trans World Radio
RTD	=	Radiodiffusion Télévision de Djibouti	UBC	=	Uganda Broadcasting Corporation
RTÉ	=	Radío Telefís Éireann	UNAM	=	Universidad Nacional Autónoma de México
RTI	=	Radio Taiwan International	Unific.	=	Unification
RTL	=	Radio Télévision Luxembourg	V.	=	Voice
RTM	=	Radio Television Malaysia	VO	=	Voice of
RTV	=	Radio & Television	VOA	=	Voice of America
RUI	=	Radio Ukraine International	VOIRI	=	VO the Islamic Republic of Iran
SABC	=	South African Broadcasting Corporation	VOP	=	Voice of the People
SADR	=	Saharwi Arab Democratic Republic	VORW	=	VO the Report of the Week
San Seb.	=	San Sebastián	VOT	=	Voice of Turkey
SBA	=	Saudi Broadcasting Authority	VOV	=	Voice of Vietnam
Scan.	=	Scandinavian	WOR	=	World of Radio
Sce	=	Service	WS	=	World Service
Sed.	=	Sedayee			